

## Help shape your services

**Residents across Caerphilly county borough are being asked to help shape the way the council delivers services in the future as it faces unprecedented budget cuts over the next few years.**

Welsh Government funding has been significantly reduced, and therefore as a consequence, Caerphilly like other local authorities across Wales is under severe financial pressure.

To date, the council has been working on a reduction in funding of 1.34% for each of the next 2 financial years and a savings requirement of £13.4 million. However, the Minister for Local Government has suggested that the position is likely to be much worse and has asked

local authorities to start planning for reductions of up to 4.5%.

In the worst-case scenario this could result in a savings requirement of **£30.1m** over the 2015/16 and 2016/17 financial years.

In 2013 residents were asked whether they understood the reasons why Caerphilly needs to make significant cuts and whether

they agreed that the council needs to identify priority services and review other less essential services. **Over 90%** of those who responded to the survey agreed.

Local authorities are legally obliged to deliver key statutory services such as Education, Social Services, Trading Standards, Child Protection, Planning, Housing,

Highway Maintenance and Waste Management etc, but there many other discretionary services which the council chooses to deliver over and above its statutory duty, but is not legally required to do so.

Statutory services will be subject to efficiency savings targets, but the focus of this consultation is on **discretionary services** and residents are being asked to prioritise those they feel are most important to the community. Once cut, there will be little or no opportunity for these services to be reinstated in the foreseeable future.

Please take time to complete the survey in the centre page pullout so the council can use residents' views to help shape services and inform budget decisions over the coming years. The consultation period will run until **30th September**.





# When is a pothole not a pothole?



## The problem with potholes...

Each year the council fills in thousands of potholes on roads and footpaths across the Caerphilly county borough.

Potholes, cracks and other faults in the road surface are caused by a number of factors including weather conditions, traffic volume, condition of the surface and the age of the road structure.

Some people have asked why the council fill in some potholes, but others are left unrepaired. The simple answer is that we have a policy in place which defines what a pothole is in terms of depth and size. If it doesn't meet this criteria, it isn't filled.

## How big does a pothole need to be?

Holes deeper than 40mm on 'A' and 'B' roads are considered to be a pothole, whereas on link roads and local access roads the definition is 50mm.

On main walking routes and footpaths the definition is 20mm, with cycle trails and local footpaths being 40mm.

## Why not fill them all in?

As residents can appreciate, the logistics and cost of filling every minor blemish in the road surface would be significant, so the council assesses each case to determine whether the hole is indeed a pothole and warrants repairing.

As well as this reactive approach, there is also a forward maintenance schedule in place which involves a programme of planned repair works in pre-determined locations across the area.

## Patching the problem

'Patching' - or filling individual potholes - is used to prolong the life of a road

avoiding the need for more expensive resurfacing works. Repairs to cracks and small holes in the surface are vital to maintain the integrity of the overall road structure. Patching also helps ensure the surface forms a seal against water penetration that may damage the road foundation, therefore prolonging the life of the road.



## Who does what?

A typical repair would begin with a Highway Inspector marking out the defect with yellow paint before submitting a request for the work to be undertaken.

A highway repair crew would then visit the site, prepare the road surface and fill the pothole with asphalt material up to 85mm thick. Works are generally carried out within 28 days of the Highways Inspector's initial visit and checked for during their next inspection.

There are occasions when temporary repairs are made to keep the road surface safe before a permanent repair is done at a later date.

## How much does the council spend?

The council has an annual highway maintenance budget of £1.1 million over a 1,200km highway network.

In excess of 20,000 potholes are repaired each year in order to limit damage to vehicles and help make our highway network safe and fit for purpose.

For further information, please visit [www.caerphilly.gov.uk](http://www.caerphilly.gov.uk)



## Operation Santa

Help make Christmas special for over 600 children.

Pledge lines open 3rd November.  
Please pledge a gift by 29th November and deliver to one of our collection centres by 3rd December

Operation Santa works in partnership with a number of charities and good causes benefitting local children.



**Collection Centres**

- Apex Estate Agents, Bargoed
- Lloyds Bank, Rhymney
- Visit Caerphilly Centre, Caerphilly
- Barclays Bank, Ystrad Mynach
- Risea Family Centre, Risea
- Customer First, Blackwood
- Customer First, Pontllotyn
- Penallta House, Hengoed
- Pontllanfraith House, Pontllanfraith

Pledge Hotline: **01443 866577**  
or email: [operationsanta@caerphilly.gov.uk](mailto:operationsanta@caerphilly.gov.uk)



# Tackling hate crime

## Partner agencies have been joining forces to tackle hate crime in Caerphilly county borough.

A hate crime or incident is an offence committed against a person or property because they are seen as being different in some way; race, religion, disability, age, sexual orientation or gender identity.

Although levels of hate crime in Caerphilly county borough are relatively low, a number of organisations have joined forces to address isolated incidents and offences.

The council has been working closely with partners including Gwent Police, the Crown Prosecution Service, local colleges and the Youth Offending Service as part of a multi-agency Community Cohesion Forum and specific Caerphilly Hate Crime Group to raise awareness and encourage victims to report incidents of hate crime in the area.

As part of these efforts the council has launched a series of web pages with information on how residents can report hate crimes and incidents to partners.

The council has also provided awareness-raising courses and training to staff, schools,

governors and a range of partners in order to increase their understanding of hate crimes. In schools, reporting of bullying incidents with a discriminatory element has been mandatory since September 2012.

Contact Victim Support on **08456 121 900** to report an incident of hate crime anonymously/confidentially or access support. More information can be found at [www.reporthate.victimsupport.org.uk](http://www.reporthate.victimsupport.org.uk)

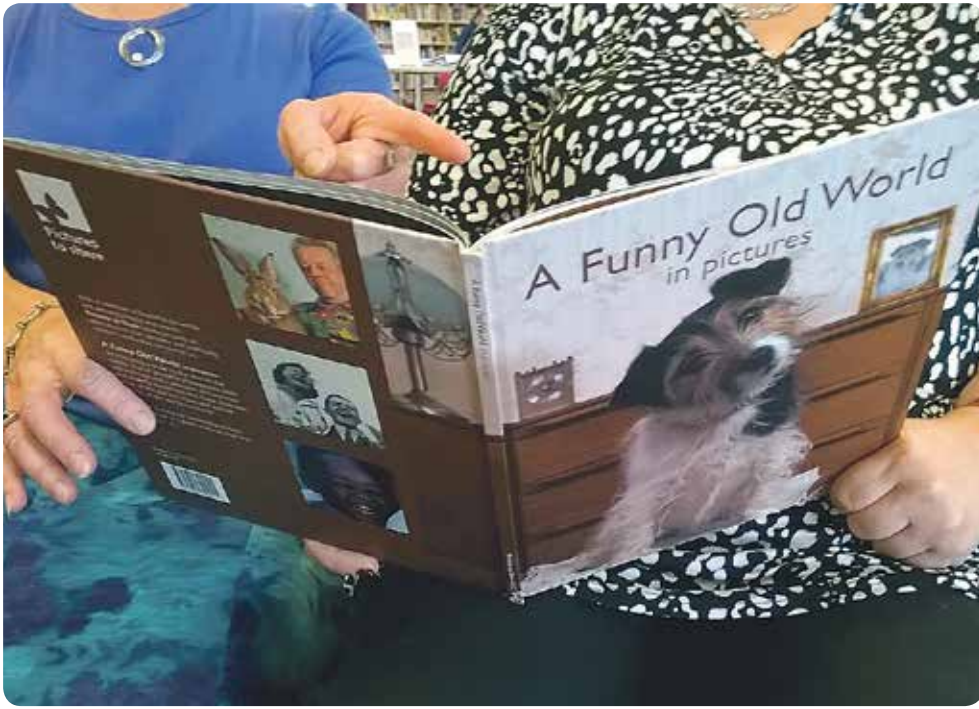
Alternatively, visit [www.caerphilly.gov.uk/equalities](http://www.caerphilly.gov.uk/equalities) for more information.

In an emergency you should ring the Police **999** or Police non-emergency **101**.





# New resources for people with dementia



**Libraries and Residential Care Homes in Caerphilly county borough can now offer people living with dementia a series of special books thanks to the council's Social Services team.**

The books, called "Pictures to Share", are especially designed for people with dementia and their carers and provide a way of communicating in an enjoyable and meaningful way. Social Services have provided Libraries, the Alzheimer's Society, Age Cymru Gwent and Residential Care Homes across the county borough with the books.

Social Services have also invested in six pop-up Reminiscence Rooms. These pods help create a familiar environment for people with dementia living in residential care homes.

Cllr Robin Woodyatt said "As part of our work to develop 'Age Friendly Communities', we recognise that many of our residents are caring for people with dementia in the community and we wanted them to have access to these engaging books. It is also important that people with dementia are offered care in an environment familiar to them so we have invested in the pop-up Reminiscence Rooms to give them this opportunity if they are no longer able to live in their own homes."

The Reminiscence Room pods and books will be available in a number of Residential Care homes across the county borough.

**For more information contact: 50+ Positive Action on 01443 864681**

## Improvements to waste collection

**Some residents could see changes to their waste collection as the council transforms the way it collects waste from homes around the county borough.**

This month (from 15th September) the council will run new WMDesign optimisation computer software that will make the routes used by waste collection lorries more efficient, cost effective and environmentally friendly.

As a result of the new routes some residents may see changes to the days their kerbside

recycling, refuse, food and garden waste is collected. Over the last few weeks, officers from the council's Waste Management team have been posting information leaflets to all residents to notify them of any changes to their collection days.

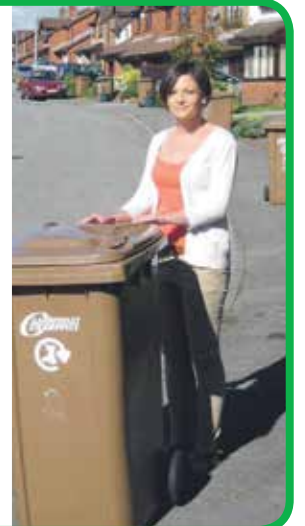
Cllr David Poole said: "This new software has the capacity to recalculate our waste collection routes and improve efficiency whilst also cutting down on fuel costs and emissions.

"To minimise disruption, information fliers have been posted to all properties. While not all residents will see an alteration to their collection

day there may be a change to the collection times, so please ensure all containers are placed at the collection point by 6am.

"Caerphilly county borough residents have already played a leading role in ensuring that as a council we have one of the best recycling rates in Wales, and I would like to thank all of our residents for their patience while these new changes take effect."

**For more information please call 01443 866533 or visit [www.caerphilly.gov.uk](http://www.caerphilly.gov.uk)**



## Commonwealth Challenge

**Caerphilly Adventures took on a very special challenge to celebrate the Commonwealth Games in Glasgow this summer.**

The council's Outdoor Education Team, along with 10 young people who are currently completing their Duke of Edinburgh Award, set sail for Scotland on Challenge Wales, a 72-foot yacht owned by a charity that gives young people the opportunity to experience sailing.

The team on Challenge Wales won the Smallships Boat Race at the beginning of the Games and became the lead boat as the 250 boats took part in the Commonwealth Flotilla, sailing along the River Clyde to celebrate the Commonwealth Games coming to Glasgow.

Caerphilly Adventures is the council's Outdoor Education Service. They provide tailor made programmes for schools and also cater for adults, leaders and families.



**For more information on how to get involved with Caerphilly Adventures, call 01495 221 058 or email: [keepra@caerphilly.gov.uk](mailto:keepra@caerphilly.gov.uk)**

## Improvement Objectives

**Caerphilly County Borough Council has outlined its six key priorities for action during 2014/15.**

The council's improvement objectives complement the authority's wider priorities. The six improvement objectives for 2014/15 focus on specific improvements to services including support for looked after children and young people, improving job opportunities through the Passport scheme and developing an effective Youth Service.

Other priority areas include promoting the use of leisure, community and sporting facilities, investment in council homes and preventing homelessness.

**For full details please visit [www.caerphilly.gov.uk](http://www.caerphilly.gov.uk)**



# Mobile centre hits the road!

The council's new mobile customer service centre, which will make accessing council services much easier for thousands of Caerphilly county borough residents has hit the road.

The vehicle visits a number of the county borough's more rural towns and villages on a weekly basis, and offers a wide range of council services including:

- **Paying council tax/council rent**
- **Council tax enquiries**
- **Requesting a council housing repair**
- **Applying for an older persons travel pass**
- **Accessing information on council services**
- **Searching for current council job vacancies**
- **Submitting requests such as for a bulky waste collection, to report a pothole or a broken streetlight etc**



## The vehicle visits the following towns and villages on a weekly basis:

<b>Tuesday</b>	<b>DERI</b> Community Centre	<b>09.30 - 11.00</b>	<b>RHYMNEY</b> Fire Station	<b>14:00 - 15.30</b>
<b>Wednesday</b>	<b>NELSON</b> Next to the bus station	<b>09.15 - 10.45</b>	<b>Trinant</b> Trinant Terrace square	<b>14.00 - 15.30</b>
<b>Thursday</b>	<b>YNYSDDU</b> Car park on High street	<b>09.30 - 11.00</b>	<b>New Tredegar</b> White Rose Way	<b>14.30 - 16.00</b>
<b>Friday</b>	<b>TY-SIGN</b> Car Park off Elm Drive	<b>09.45 - 11.15</b>	<b>ABERTRIDWR</b> Opposite YMCA	<b>14.00 - 15.30</b>

Weekly visits to **Fochriw**, **Gelligaer**, **Pantside** and **Bedwas** will also be built into the timetable over the coming weeks.

Further information can be found at [www.caerphilly.gov.uk](http://www.caerphilly.gov.uk) or by calling **01443 864 143**

## Don't lose your vote

Over the summer, all Caerphilly county borough residents will have received a letter through the post telling them about the biggest change to the electoral registration system in nearly 100 years.



The letter explained that a new, more secure, system of Individual Electoral Registration had been introduced to replace the old Victorian system where previously the 'head of household' registered everyone living in a property. Now each individual is responsible for registering themselves.

Most residents automatically moved onto the new electoral register or provided further information enabling them to be moved over. However, some were informed that they needed to take action but have yet to do so.

Residents who have not yet provided the additional information may lose their right to vote at next year's parliamentary election and residents who usually vote by post, or appoint someone else to vote on their behalf will no longer be able to do so.

For more information call **01443 864203**, visit [www.gov.uk/yourvotematters](http://www.gov.uk/yourvotematters), or e-mail: [electoralservices@caerphilly.gov.uk](mailto:electoralservices@caerphilly.gov.uk)

## White Ribbon status

The council and its partners have recently been awarded the White Ribbon status award for their commitment to helping stop violence against women.

The White Ribbon Campaign has been running in the UK since 2004. It was set up by men who wished to take a stance and make a visible personal pledge never to commit, condone or remain silent about violence against women.

Cllr Robin Woodyatt said, "We are proud to support the White Ribbon campaign here in Caerphilly county borough. Domestic violence can affect the whole family and community – it is vital that we raise awareness, and that Caerphilly county borough is seen as a place where violence against women – or anyone for that matter, is neither acceptable, nor tolerated."

Cllr Dave Poole added, "I strongly urge anyone who is either suffering from domestic violence themselves, or who knows someone who is, to come forward to one of the many services available and seek help. No-one should have to live in fear." Further information on the domestic abuse support services available in Caerphilly county borough can be found at [www.caerphilly.gov.uk/safeccb](http://www.caerphilly.gov.uk/safeccb) or by calling **01443 819 317**. In an emergency, call **999**.

## Have your say

In June's edition of Newsline, residents were told how the council is working in partnership with local housing associations to streamline and simplify the way people apply for social housing in Caerphilly county borough.

This work has continued over the summer, involving partners working on the development of a common housing register and producing a draft common allocation policy. It is expected that the new register and policy will be introduced by summer 2015.

The council and partners are now consulting with local people and organisations on the draft version of the policy. During this consultation period, which ends in mid-November, the council would like to talk to as many people as possible about the changes.

When the consultation period ends, all responses will be considered and the policy finalised. The council will then ratify the policy and ask each housing association to sign up to it.

The consultation can be found at [www.caerphilly.gov.uk](http://www.caerphilly.gov.uk)

For a hard copy of the consultation or for further information, please call **01495 235 216** or email: [privatesectorhousing@caerphilly.gov.uk](mailto:privatesectorhousing@caerphilly.gov.uk)

# Remembering the Great War

**A major new exhibition to mark the centenary of the start of the First World War was launched recently at the Winding House museum in New Tredegar.**



The exhibition 'Our Duty to Bear – the First World War and Caerphilly county borough', explores how the war affected men, women and children across Caerphilly county borough. From the Western Front to the Home Front, the exhibition explores local experiences of the War through carefully curated objects, images, film and sound.

Visitors to the Winding House have the opportunity to discover the experiences of the people from Caerphilly county borough during the First World War and how the war impacted on their lives; from the young Caerphilly pilot in the Royal Flying Corps, to

the escaped Prisoner of War from New Tredegar; from the mother from Fleur de Lys with two sons both killed at the age of 19, to the conscientious objector Morgan Jones; and from the Blackwood miner who joined the tunnelling regiment, to the young girl from Tirphil writing to her daddy to ask him to come home from the war.

The exhibition also includes original film footage from the First World War period, as well as a reconstructed trench section and recollections of the Battle of the Somme from a local soldier – in his own words – from a recording made in the 1970s. The Winding House is open Tuesday to Sunday – 10am until 5pm, and is open also on Bank Holiday Mondays. Admission is **FREE**. For further information, please visit [www.windinghouse.co.uk](http://www.windinghouse.co.uk) or call **01443 822 666**.



## Forthcoming events:

**15th September – Nelson Library** will host a talk on WWI to commemorate the centenary of the outbreak of WWI. Come along 2.30pm - 4.00pm.

**3rd October 2014 - Bargoed Library** will host a talk on WWI to commemorate the centenary of the outbreak of WWI. Come along 3.00pm - 4.30pm.

**11th November** To mark Armistice Day White Rose Primary School and Phillipstown Primary School will march through New Tredegar with two large banners made entirely of individually printed poppies that 300 children from both schools were involved in making.

**12th & 13th November – Blackwood Miners' Institute** will host a play produced by Lewis School Pengam and professional playwright Larry Allen. A grant from the Lottery Heritage Fund has allowed pupils to work with letters that were sent to the school from pupils who were in the trenches during WWI, which will be the focus of the play. The play will also focus on the conscientious objector Morgan Jones, another former pupil of the school. For more information, visit [www.blackwoodminersinstitute.co.uk](http://www.blackwoodminersinstitute.co.uk).

**19th November – Blackwood Library** will host a talk on WWI to commemorate the centenary of the outbreak of WWI. Come along 2.00pm - 3.30pm.



**Schools, community groups, businesses and individuals are being encouraged to show they have pride in their environment by entering the Pride in your Place awards 2014.**

Pride in your Place is organised by Caerphilly County Borough Council to acknowledge the endeavour, innovation and commitment of those who help make their area a cleaner, greener and safer place to live, work and visit. The awards will feature 11 different categories, ranging from Best Kept Area and Best Environmental Business to Recycling in Schools and Environmental Champion awards. Category winners and runners up will receive a cash prize, and be eligible for the prestigious Overall Winner award.

**The closing date for applications is 14th October 2014.**

SEDA, a major international packaging company with a base near Blackwood, has agreed to be a key sponsor once again for this year's Pride in your Place Awards.

**A full list of categories and nomination forms can be found at [www.caerphilly.gov.uk/prideinyourplace](http://www.caerphilly.gov.uk/prideinyourplace)**

For further information, please call **01443 873 758**

## Changes at recycling centres

**From Wednesday 1st October, residents using vans and trailers to deposit waste from construction or demolition works at household waste recycling centres (civic amenity sites) will be subject to new charges.**

### Charges are as follows:

- **£35 for a car derived van**  
(for example, 'Escort' vans, Transit Connect vans and trailers less than 1.8 metres long).
- **£70 for larger vans** (up to Ford Transit size).
- **Vans greater than Ford Transit size**  
e.g. Luton Vans, Tippers and trailers which are greater than 1.8 metres in length will no longer be able to access the sites.

Vans (transit size and below) and small trailers (less than 1.8m in length) carrying household waste will be allowed to deposit waste free of charge, but residents must collect a tipping permit from one of the council's cash or Customer First offices beforehand.

To ensure the sites are used by Caerphilly county borough residents only, proof of residency will be required when obtaining a permit along with the vehicle registration document. The permit will be single use and must be handed in at the site. Residents will be entitled to up to six free van permits in a 12-month period. No commercial/trade waste will be allowed at any of the sites.

**Residents using cars to deposit waste at these sites will be unaffected by these changes and will still be able to use the facilities free of charge.**

**For further information on Household Waste Recycling Centres, please visit [www.caerphilly.gov.uk](http://www.caerphilly.gov.uk) or call **01443 866 533****





# 10 years of Community Safety Wardens!

## The council's team of Community Safety Wardens are celebrating their tenth anniversary this month.

The Community Safety Warden Service was launched in September 2004 to provide a uniformed presence in Caerphilly county borough communities, and to reduce levels of crime, anti-social behaviour and fear of crime as a result.

The Wardens also provide reassurance and assistance in order to help create an even safer, more pleasant living environment within our communities. Ten years on, and the council's Community Safety Warden service continues to go from strength to strength – the team were even awarded a prestigious Lord Ferrers Award by the Home Office earlier this year for their work in Caerphilly county borough communities.



Rt Hon Damian Green MP, presented the team with a Lord Ferrers Award.

Cllr David Poole said, "Our Community Safety Wardens are consistently at the forefront in helping to address local issues which are of concern to residents, and are an extremely reassuring presence in communities across Caerphilly county borough. I am full of praise for the excellent work they do."

**Safer Caerphilly County Borough**  
**Bwrdeistref Sirol Caerffili Saffach**

## Over the last 10 years, the team of 10 Community Safety Wardens have:

- Carried out **23,364** targeted patrols to address anti-social behaviour and environmental concerns.
- Spent **69,764** hours on high visibility patrol, helping to reassure residents.
- Made **394** referrals into the four-strikes anti-social behaviour process.
- Given **8,790** words of advice to people committing minor offences.
- Attended **1,056** PACT meetings, helping to address community concerns raised at these meetings.
- Liaised with ward members **1,694** times about local issues in their wards.
- Attended and helped enforce road closures at **72** Remembrance Day services and parades.
- Advised **4,590** drivers that they had left items on view in their vehicles, and offered advice on preventing car crime.
- Confiscated **4,722** items of alcohol from under-age drinkers and those drinking in areas covered by a Designated Public Place Order (DPPO).



For further information on the Community Safety Wardens, please visit [your.caerphilly.gov.uk/saferecb](http://your.caerphilly.gov.uk/saferecb)

## Connecting communities

### Know someone who is isolated from their community or family, or someone who appears lonely?

The council has a number of 'Community Connectors' working throughout the county borough to try and help re-connect people back into their communities. Community Connectors work with many groups and organisations within communities to help people find activities and groups that can benefit their own wellbeing.

#### Community Connectors aim to:

- Help people remain as independent as possible
- Help people to improve their sense of wellbeing
- Help people to feel less lonely
- Help people feel a part of their community



Community Connectors can also work within communities to offer advice & guidance to local people about how they can use their own strengths, skills and experiences to help others.

To talk to someone about the Community Connector scheme, please call **0808 100 2500** or email: [asdit@caerphilly.gov.uk](mailto:asdit@caerphilly.gov.uk)

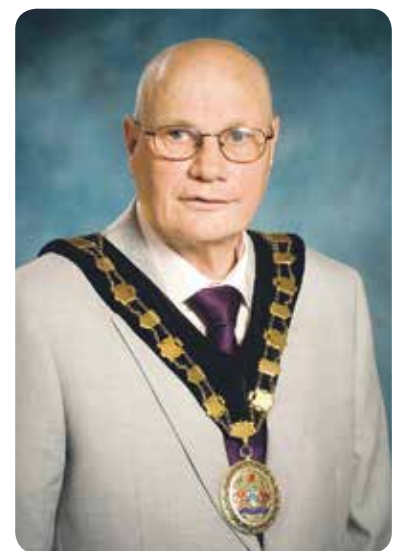
## One Beat!

### The invaluable work of volunteers across the county borough will be celebrated at a special event next month.

Representatives from around 80 voluntary organisations who serve the community will come together and showcase their work at the annual One Beat event on Saturday 25th October at the council's headquarters Penallta House between 11am and 1pm.

The event is organised by Caerphilly County Borough Council and Gwent Association of Voluntary Organisations (GAVO).

The Mayor, Cllr David Carter said, "This is one of our most established events, and provides a fantastic opportunity to celebrate the invaluable work of the voluntary organisations across the county borough who serve our communities so tirelessly". For further information, or for voluntary organisations wishing to exhibit their work at One Beat, please call **01443 864312**.





# Caerphilly's Warm Welcome

**With less than a year to go until the National Urdd Eisteddfod comes to Caerphilly county borough 2015, on the weekend of the 4th of October, a special 'proclamation festival' will be held in Caerphilly.**

The proclamation festival, will be a chance for local people to come together to welcome the Eisteddfod to the area. It is expected that hundreds of children, young people, teachers, parents and supporters will join in the festivities.

The Eisteddfod will be coming to Caerphilly county borough between 25th and 30th May 2015. Llancaiach Fawr will host the 6 day festival and along with various competitions there will be activities, stalls, an open air theatre and a fun fair so that people of all ages can come and enjoy the Eisteddfod. The Eisteddfod is one of the main youth festivals in Wales which offers chances for over 45,000 children and young people from all across Wales to compete by singing, dancing, reciting poetry and much more.

On 4th October, the proclamation festival will be a chance to experience a fraction of the fun and excitement of the Eisteddfod with a warm welcome to anyone who wants to join in with a special parade that starts at 1:30pm from St. Martins School and finishing at the Castle.

After arriving at the Castle there will be activities, stalls and plenty of free entertainment awaiting, including highlights for the older children to include performances from Martyn Geraint, and Einir and Gareth from the S4C children's programme 'Cyw'. There will also be photo opportunities with some 'Cyw' characters and Mistar Urdd. A second stage will offer various entertainment for the older members of the crowd.

All the schools in the county borough have been invited to come to the parade with the chance of winning a cash prize of £500 for creating the best banner that is a colourful representation of their school and their area.

During the week leading up to the proclamation festival, many events will be taking place within the area. To join in the fun and for more information go to [www.urdd.org/eisteddfod](http://www.urdd.org/eisteddfod)



**COMING SOON...  
NEW CCBC WEBSITE**

**CHANGING  
THE WAY WE  
DO BUSINESS**

**AUTUMN  
2014**

**CAERPHILLY  
COUNTY BOROUGH  
CAERFFILI**

## Non-attendance at school

**Improving regular attendance at school is a key priority, both locally and nationally.**

The Welsh Government has introduced important amendments to legislation surrounding school attendance. The Education Act 1996 makes it a criminal offence for a parent to "fail to secure their child's regular attendance at the school."

The new amendments include a penalty notice scheme. This means that from September, a Head teacher can request that the local authority issue a Fixed Penalty Notice (FPN) for irregular attendance of a child or young person registered in their school. This includes pupils who attend an alternative education provision arranged by the council.



**Some examples of when a Fixed Penalty Notice can be issued:**

- **Unauthorised absences** - Where at least 10 sessions (5 schools days) are lost to unauthorised absences; these do not need to be consecutive. Parents/carers will receive a formal notification from the Head teacher explaining the actions that may be taken;
- **Holidays in term time** - A Fixed Penalty Notice can be issued if leave of absence has not been agreed by the school (unauthorised) for ten sessions (five school days) or more during term time; these have to be consecutive school days.
- **Persistent late arrival** - at least 10 sessions of late arrival at school after the register has closed (there are two sessions in a school day, morning and afternoon);
- **Truancy** - where a child or young person comes to the attention of the Police during school hours for being absent from their registered school without an acceptable reason.

Where both parents have responsibility for their child, each parent can receive a fixed penalty notice of £60 per child (paid within 28 days).

**Further information can be found at [www.caerphilly.gov.uk](http://www.caerphilly.gov.uk)**

# Have your say on discretionary services

The council has identified the following list of discretionary services that are subject to this consultation exercise. It is likely that no discretionary service will remain untouched.

**We want to have your opinion about each service and whether you feel they are:**

**High Priority** Those service areas that you regard as the most important and would like to see protected from the full extent of cuts wherever possible.

**Low Priority** Those service areas where you would like to see some level of service maintained, even though there will inevitably be reductions in the level of service provided.

**Non-Priority** Those services that you do not consider to be important and could be cut completely.

From the list below, please identify the service areas you think are a high priority, a low priority or not a priority for you and your community. You should also think about the 'knock on' effect and longer term consequences of any of your choices.

<b>Discretionary Service</b> <small>Please turn over to see the remaining Discretionary Services</small>	<b>Total budget 2014/15</b>	<b>High Priority</b>	<b>Low Priority</b>	<b>Non Priority</b>
<b>Adult Services Shopping Service</b> Provided for people as part of their care package. Basic goods are purchased from a local shop.	<b>£690,000</b>			
<b>Apprenticeship Scheme</b> Employing young people to work as apprentices at the council.	<b>£495,000</b>			
<b>Asset Rationalisation</b> The management of corporate and non-corporate buildings. The maintenance and running costs associated with main corporate offices at Penallta House and Pontllanfraith House and a large range of non corporate buildings.	<b>£5,476,000</b>			
<b>Business Development Services</b> Supporting local businesses with a range of grants and advice.	<b>£484,000</b>			
<b>Catering Provision</b> Meals Direct (Meals on Wheels) provision of freshly cooked meals to people in their own homes, Sheltered Housing & Civic Catering.	<b>£296,000</b>			
<b>CCTV Services</b> Including town and village CCTV cameras, public help points and tannoy warning speakers. Also dealing with emergency out of hours calls including highways, housing repairs and emergency planning.	<b>£515,000</b>			
<b>Civic Amenity Sites</b> Local waste disposal centres for household material - 6 sites. The authority must legally provide at least 1 site.	<b>£666,000</b>			
<b>Cleansing</b> Including town centres, residential streets and other public areas.	<b>£4,076,000</b>			
<b>Communications</b> Providing news and information to residents about council services, events and announcements, as well as consulting with the community to help shape services.	<b>£300,000</b>			
<b>Community Centres</b> This relates to the 39 community centres throughout the borough.	<b>£597,000</b>			
<b>Community Education</b> Adult Education Courses, Clubs and societies. Youth service - Youth centres, clubs and informal qualifications.	<b>£1,847,000</b>			
<b>Community Safety Wardens</b> Service tackling anti-social behaviour hotspots and environmental crime e.g. littering, dog fouling, and graffiti. Responding to residents complaints and providing reassurance patrols across the county borough.	<b>£355,000</b>			
<b>Council Tax Pensioners Grant</b> Additional financial support for pensioners receiving some but not 100% Council Tax reduction.	<b>£246,000</b>			
<b>Country Parks</b> Including Public Rights of Way and environmental maintenance.	<b>£656,000</b>			
<b>Customer First</b> Front line services via Customer First Centres, Contact Centre, Cash Offices, Reception Services and the council's Switchboard.	<b>£1,545,000</b>			
<b>Day Centre provision</b> Day services are provided for adults in a variety of settings across the borough to reduce social isolation and support informal carers. Transport is also provided to and from day centres in many cases for individuals.	<b>£4,260,000</b>			
<b>Events and Marketing</b> Organising major events such as the Big Cheese and other local town centre events. In addition, the team promote Caerphilly county borough as an investment and tourist destination.	<b>£483,000</b>			
<b>Grants to the Voluntary Sector</b> Financial support for local groups and organisations.	<b>£255,000</b>			
<b>Grounds Maintenance, Parks, Outdoor Facilities</b> Including bowling greens, cricket squares, sports pitches, park ranger and grass cutting services.	<b>£2,502,000</b>			
<b>Health Improvement</b> The team leads and delivers health improvement initiatives and the local response to Health Challenge Wales and Change 4 Life interventions. This includes addressing smoking, obesity, physical activity, alcohol, drugs and issues associated with mental health, heart disease, diabetes, cancers etc.	<b>£150,000</b>			
<b>Home to School Transport</b> (Discretionary element) The current service exceeds the statutory minimum levels of 1.5 miles for primary (2 miles) and 2 miles for other (3 miles).	<b>£6,496,000</b>			
<b>Industrial Properties</b> Including Council operated industrial estates – the management of a portfolio of 200 industrial units and 3 managed office schemes. These facilities attract inward investment and jobs as well as generating income for the authority.	<b>£858,000 income</b>			



<b>Discretionary Service</b>	<b>Total budget 2014/15</b>	<b>High Priority</b>	<b>Low Priority</b>	<b>Non Priority</b>
<b>Library Services</b> Provision of service is statutory, level of provision discretionary. Currently 18 static libraries plus housebound service. Provides free access to reading materials for all ages, information and free access to computers, wifi and the internet.	<b>£2,932,000</b>			
<b>Music Service</b> Promoting music in schools – 30 specialist staff supporting the music curriculum in schools by providing a broad range of musical instruments and vocal tuition.	<b>£703,000</b>			
<b>Public Bus Service</b> Support for the bus network throughout the borough - subsidisation of selected bus routes.	<b>£700,000</b>			
<b>Public Conveniences</b> Toilet facilities in town centres and other key community locations.	<b>£97,000</b>			
<b>School Crossing Patrol Service</b>	<b>£360,000</b>			
<b>Sport and Leisure Services</b> The provision of facilities such as leisure centres and activities to enable more residents of all ages to lead healthy and active lifestyles.	<b>£2,400,000</b>			
<b>Street Lighting</b> Saving options could include part night lighting, e.g. switching off from midnight to 5am in residential areas.	<b>£1,570,000</b>			
<b>Tourism Venues &amp; Facilities</b> Including Blackwood Miners Institute, Llancaiach Fawr, the Winding House Museum, Cwmcarn Visitor Centre and Caerphilly Visitor Centre. These venues are popular community attractions that also generate income to the authority and promote the area as a tourist destination.	<b>£1,333,000</b>			
<b>Town Centre Management</b> Promoting and supporting the 5 main town centres.	<b>£116,000</b>			
<b>Urban Renewal</b> Improving our communities and town centres.	<b>£284,000</b>			

Of those you've identified as "high priority", please write in the 3 services that are most important to you and your family:

<b>1</b>	<b>2</b>	<b>3</b>
----------	----------	----------

In delivering these discretionary services, how can we do things differently or what could we stop doing to save money?

How can you/the community get more involved in helping us to deliver discretionary services in a more cost effective way?

If you feel that budget cuts in a specific area will affect you as an individual (positively or negatively) because of any of the following (your ethnic origin, gender, age, marital status, sexual orientation, disability, gender reassignment, religious beliefs or non-belief, use of Welsh language, BSL or other languages, nationality or responsibility for any dependents) please give details below.

To ensure that we achieve a representative sample, it would be useful if you could answer the following questions about yourself.

<input type="checkbox"/> <b>As a resident of the County Borough</b>	<input type="checkbox"/> <b>As a business person</b>
<input type="checkbox"/> <b>Representing a third sector organisation</b>	<input type="checkbox"/> <b>As an elected member</b>
<input type="checkbox"/> <b>Other (please write in) _____</b>	<b>My Post Code is:</b> <input type="text"/> <input type="text"/> <input type="text"/> <input type="text"/> <input type="text"/> <input type="text"/>

**Thank you for taking the time to complete this questionnaire.**

Please return your completed questionnaire to any of the main council offices or your nearest library, leisure centre, cash office, housing office or customer first centre. If you prefer, you can also return the survey in the post to: **Liz Sharma, Consultation and Public Engagement Officer, Communication Unit, Caerphilly County Borough Council, Penallta House, Tredomen Park, Ystrad Mynach, Hengoed, CF82 7PG.**

This survey is also available for completion online at [www.caerphilly.gov.uk](http://www.caerphilly.gov.uk)



## Useful Numbers Rhifau Defnyddiol

<b>MAIN SWITCHBOARD</b> PRIF SWITSWRDD ☎ 01443 815588	<b>Children's Social Services</b> Gwasanaethau Cymdeithasol i Blant ☎ 0808 100 1727
<b>Minicom Minicom</b> ☎ 01443 873626	<b>Consumer Advice</b> Cyngor i Ddefnyddwyr ☎ 08454 04 05 06
<b>Emergency Number for Council Services:</b> Rhif argyfwng ar gyfer Gwasanaethau'r Cyngor: ☎ 01443 875500 (Out of hours only • Allan o Oriau yn unig)	<b>Council Tax Enquiries</b> Ymholiadau Treth y Cyngor ☎ 01443 863002
<b>Adults' Social Services</b> Gwasanaethau Cymdeithasol i Oedolion ☎ 0808 100 2500	<b>Furniture Recycling</b> Ailgylchu Dodrefn ☎ 01685 846830
<b>StreetPride BalchderStryd</b> ☎ 01443 866566	<b>Housing &amp; Council Tax Benefits</b> Budd-daliadau Tai/Treth y Cyngor New Claims: ☎ 01443 866567 Existing Claimants: Howlyr Present: ☎ 01443 864099
<b>Blue Badge Bathodyn Glas</b> ☎ 01443 866571	

### Foster Appeal

The Council needs foster carers to care for children over the age of 10. We offer extensive support, comprehensive training & attractive fees.

If you have room in your home and time in your life, why not call **0800 587 5664**, text **78866** or visit [www.caerphilly.gov.uk/fostering](http://www.caerphilly.gov.uk/fostering). Texts cost the standard network rate.



### Apêl Maethu

Mae angen gofalyddion maeth ar y cyngor i ofalu am blant dros 10 oed. Rydym yn cynnig cymorth helaeth, hyfforddiant cynhwysfawr a ffioedd deniadol.

Os oes gennych le yn eich cartref ac amser yn eich bywyd, beth am ffonio **0800 587 5664**, anfon neges destun at **78866** neu ewch i [www.caerphilly.gov.uk/maethu](http://www.caerphilly.gov.uk/maethu). Mae negeseuon testun yn costio'r gyfradd rhwydwaith safonol.

### Director's Report published

The council has recently published its annual Directors Report on the Effectiveness of Social Care Services in the county borough.

The purpose of the report is to outline how well services have been delivered over the past year, and what the focus and main priorities will be for the coming year. Cllr Robin Woodyatt said, "We are continuously demonstrating our commitment to delivering effective social care services, but we will not be complacent and will continue to adapt, build and change our services as the demands of the service change."

For further information, please call **01443 864 679**. A full copy of the Directors Annual Report can be found at [www.caerphilly.gov.uk/socialservicesacr](http://www.caerphilly.gov.uk/socialservicesacr)

### Cyhoeddiad Adroddiad y Cyfarwyddwyr

Mae'r cyngor wedi cyhoeddi Adroddiad blynyddol y Cyfarwyddwyr ar Effeithiolrwydd y Gwasanaethau Gofal Cymdeithasol yn y fwrdeistref sirol yn ddiweddar.

Pwrpas yr adroddiad yw amlinellu pa mor dda y mae gwasanaethau wedi cael eu darparu yn ystod y flwyddyn ddiwethaf, a beth fydd y ffocws a phrif flaenoriaethau ar gyfer y flwyddyn i ddo. Dywedodd y Cynghorydd Robin Woodyatt, "Rydym yn parhau i ddangos ein hymrwymiad i ddarparu gwasanaethau gofal cymdeithasol effeithiol, ond ni fyddwn yn hunanfodlon a byddwn yn parhau i addasu, adeiladu a newid ein gwasanaethau fel y mae gofynion y gwasanaeth yn newid."

Am wybodaeth bellach, ffoniwch **01443 864 679**. Mae copi llawn o Adroddiad Blynyddol y Cyfarwyddwyr ar gael o [www.caerphilly.gov.uk/socialservicesacr](http://www.caerphilly.gov.uk/socialservicesacr)

# What's ON / Digwyddiadau

[www.caerphilly.gov.uk/events](http://www.caerphilly.gov.uk/events) • [www.caerffili.gov.uk/digwyddiadau](http://www.caerffili.gov.uk/digwyddiadau)

Sign up to receive regular information about local events by e-mailing: [events@caerphilly.gov.uk](mailto:events@caerphilly.gov.uk)

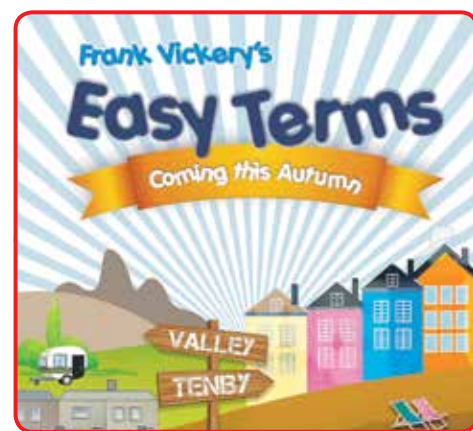
**First World War Heritage Day - #CaerphillyWWI Free**  
Diwrnod Treftadaeth y Rhyfel Byd  
Cyntaf - #CaerffiliRhB1 Am Ddim  
27/09 - 11am-4pm

**Winding House - Tŷ Weindio**  
Drop-in day with Gwent Archives, Glamorgan Archives, Caerphilly Libraries and the Winding House - find out more about the First World War in the local area through exhibitions, displays, research tips and more. Visit [www.windinghouse.co.uk](http://www.windinghouse.co.uk) or call for information.

Diwrnod galw i mewn gydag Archifau Gwent, Archifau Morgannwg, Llyfrgelloedd Caerffili a'r Tŷ Weindio - darganfyddwch mwy am y Rhyfel Byd Cyntaf yn yr ardal leol drwy arddangosiadau, arddangosfeydd, awgrymiadau ymchwilio a mwy. Ewch i [www.tyweindio.co.uk](http://www.tyweindio.co.uk) neu ffoniwch am wybodaeth. **01443 822 666**

**Bargoed Open Air Cinema - Rio 2 Free**  
**Sinema Awyr Agored**  
**Bargod - Rio 2 Am Ddim**  
03/10 - 7pm

**Emporium Car Park - Maes Parcio'r Emporiwm**  
It's a jungle out there for Blu, Jewel and their three kids in Rio 2, after they're hurtled from that magical city to the wilds of the Amazon in this hilarious comedy sequel. Jyngl ydyw i Blu, Jewel a'u tri phlentyn yn Rio 2, ar ôl iddynt gael eu tynnu o'r ddinas hudol honno i wylltiau yr Amazon yn y dilyniant comedi doniol hwn. **029 20 88 00 11**



**'Easy Terms'**  
A comedy play by Frank Vickery  
Drama gomedi gan Frank Vickery  
20-22/10 - 7.30pm  
**Blackwood Miners' Institute - Sefydliad y Glowyr Coed Duon**  
A year ago Vi suffered a stroke and her only son Howard gave up college to nurse her. She's now capable of looking after herself but finds it hard to let go. Howard has a big secret and a caravan holiday in Tenby does nothing to relieve the tension... it only serves to open up the situation for some heart-breaking comedy. Call or visit [www.blackwoodminersinstitute.com](http://www.blackwoodminersinstitute.com) for tickets. **Tickets £13 adult / £12 concession**

Blwyddyn yn ôl fe ddiroddodd Vi strôc ac fe adawodd ei unig fab coleg i ofalu amdani. Nawr mae ganddi'r gallu i edrych ar ôl ei hun ond mae hi'n ei weld yn anodd gollwng gafael ar yr holl beth. Mae gan Howard cyfrinach fawr ac nid yw gwyliu mewn carafan yn Ninbych-y-pysgod yn helpu'r tensiwn...yr unig beth i'w wneud yw agor y sefyllfa ar gyfer comedi torcalonnus. Ffoniwch neu ewch i [www.blackwoodminersinstitute.com](http://www.blackwoodminersinstitute.com) am ddcynnau. **Tocynnau £13 oedolyn / £12 csesiwn** **01495 227 206**

**Witch's Broomsticks**  
26/10 - 11.00am  
**Parc Cwm Darran - Parc Cwm Darran**

Get into the Halloween spirit by having a go at making a real witch's broomstick for Halloween. Booking essential, costs £3 per broomstick.

Ymunwch yn ysbryd Nos Galan Gaeaf drwy roi cynnig ar greu ysgubell gwrrach go iawn ar gyfer yr Wyl. Mae archebu lle'n hanfodol, cost £3 am bob ysgubell. **01443 875 557**

**Acti-Time: Half Term Horrible History!**  
**Amser Gweithgaredd: Hanes Hyll Hanner Tymor!**  
28-31/10 - 11am-12pm  
**The Winding House - Tŷ Weindio**

Fun family crafts based on different periods of history - with a bit of creepy spookiness thrown in! Booking essential - **£1.50 per child**  
Crefftau hwyl i'r teulu wedi seilio o gyfnodau hanesyddol gwahanol - gydag ychydig themau arswydus! Mae archebu lle'n hanfodol - **£1.50 y plentyn**. **01443 822 666**



**Autumn Photography Walk**  
Taith Gerdded Ffotograffiaeth yr Hydref  
01/11 - 10am

Starting at Cwmfelin Fach village car park -  
Dechrau ym maes parcio pentref Cwmfelin-fach  
Join expert photographer Tim Collier for a gentle three mile walk around Mynyddishwyn and learn how to take some fantastic photos. Booking essential. **£5 per person**

Ymunwch â'r ffotograffydd arbenigol Tim Collier am daith gerdded hamddenol o dair milltir o amgylch Mynyddishwyn a dysgwch sut i gymryd rhai lluniau gwych. Mae archebu lle'n hanfodol. **£5 y person**. **01443 875 557**



**Traditional Wreath Making**  
**Creu Blodeudorch Traddodiadol**  
15/11 10am-12pm + 2-4pm  
**Llancaich Fawr Manor - Maenordy Llancaich Fawr**

Learn how to make a traditional Christmas wreath from scratch using local foliage. All materials will be provided as well as tea, coffee and mince pies. Booking essential. **£5 per person**  
Dysgwch sut i wneud blodeudorch Nadolig traddodiadol o'r dechrau drwy ddefnyddio dail lleol. Fe ddarperir yr holl ddeunyddiau yn ogystal â the, coffi a mins-peis. Mae archebu lle'n hanfodol. **£5 y person** **01443 412 248**



**Stargazing @ Cwmcarn**  
**Syllu ar y Sêr yng Nghwmcarn**  
29/11 - 7pm  
**Cwmcarn Forest - Coedwig Cwmcarn**

Join the team at Cwmcarn for a magical evening spent looking at the stars in the skies above the forest! Hot drinks and food will be provided. Booking essential. **Tickets £7.50 per adult and £4 per child (7+)**  
Ymunwch â'r tim yng Nghwmcarn am noson hudol yn edrych ar y sêr yn disgleirio uwchben y goedwig! Fe ddarperir diodydd poeth a bwyd. Mae archebu lle'n hanfodol. **Tocynnau £7.50 i oedolion a £4 i blant (7+)** **01495 272 001**



Cofrestrwch i dderbyn gwybodaeth reolaidd am ddigwyddiadau lleol drwy e-bostio: [digwyddiadau@caerffili.gov.uk](mailto:digwyddiadau@caerffili.gov.uk)

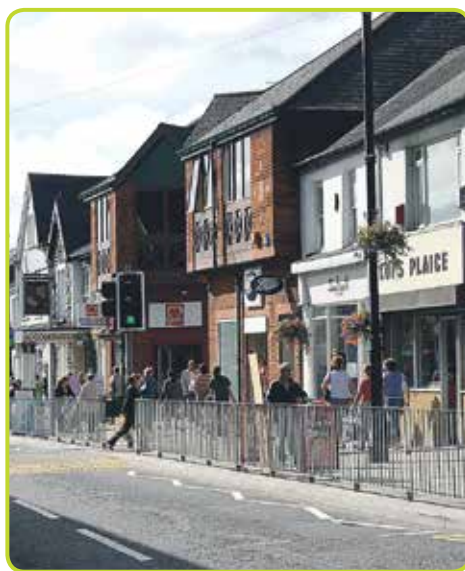
## New rate relief schemes • Cynlluniau Rhyddhad Ardrethi newydd

**Caerphilly County Borough Council is urging eligible local businesses to claim savings in business rate relief.**

Introduced by Welsh Government, the Wales Retail Relief Business Rate Scheme aims to give qualifying ratepayers assistance on a business rates bill for the financial year 2014/15. The grant assistance applies to qualifying occupied retail premises with a rateable value of £50,000 or less, that are wholly or mainly providing a service to visiting members of the public. Officers from Caerphilly County Borough Council have already posted application forms to qualifying establishments encouraging them to take advantage of the financial support on offer.

Welsh Government is also making funding available to local authorities to deliver a Local Needs Business Rate Relief Scheme. The scheme adopted by the council aims to provide rate relief for the financial year 2014/15 to those businesses occupying premises with a rateable value of £50,000 or less that are identified in the 'rating list' for the council's area as being an industrial property type (e.g. factory, workshop) and the property is used for manufacturing or industrial warehousing. Application forms will be issued during August and September 2014 directly to businesses who appear to be eligible.

For more information please visit [www.caerphilly.gov.uk](http://www.caerphilly.gov.uk) or contact **01443 863006**



**Mae Cyngor Bwrdeistref Sirol Caerffili yn annog busnesau lleol cymwys i hawlio arbedion mewn rhyddhad ardrethi busnes.**

Wedi ei gyflwyno gan Lywodraeth Cymru, mae'r Cynllun Rhyddhad Ardrethi Busnes Manwerthu Cymru yn anelu at roi cymorth i drethdalwr cymwys ar fil cyfraddau busnes ar gyfer y flwyddyn ariannol 2014/15. Mae'r cymorth grant yn gymwys i adeiladau manwerthu sydd dan feddiant gyda gwerth ardrethol o £50,000 neu lai, sydd yn darparu gwasanaeth llawn neu'n bennaf i aelodau o'r cyhoedd sy'n ymwelwyr. Mae Swyddogion o Gyngor Bwrdeistref Sirol Caerffili wedi postio ffurflenni cais yn barod at sefydliadau cymwys drwy eu hannog i gymryd mantais o'r cymorth ariannol sydd ar gael.

Mae Llywodraeth Cymru hefyd yn gwneud cyllid ar gael i awdurdodau lleol i ddarparu Cynllun Rhyddhad Ardrethi Busnes Anghenion Lleol. Mae'r cynllun sydd wedi ei fabwysiadu gan y cyngor yn bwriadu darparu rhyddhad ardrethi am y flwyddyn ariannol 2014/15 i'r busnesau hynny sy'n meddu ar adeiladau gyda chyfradd ardrethol gwerth £50,000 neu lai sy'n cael eu hadnabod yn y 'rhestr gyfradd' ar gyfer ardal y cyngor sydd yn fath o eiddo diwydiannol (e.e. ffatri, gweithdai) ac mae'r eiddo yn cael ei ddefnyddio ar gyfer cynhyrchu neu ystody diwydiannol. Bydd ffurflenni cais yn cael eu cyhoeddi yn ystod mis Awst a mis Medi 2014 yn uniongyrchol at fusnesau sydd yn gymwys.

Am ragor o wybodaeth ewch i [www.caerffili.gov.uk](http://www.caerffili.gov.uk) neu ffoniwch **01443 863006**

## PROTECTING YOU

The council's Public Protection team aims to ensure that the county borough is a healthy, safe and fair place for people to live, work & visit.

One of the team's key tasks is to expose and bring before the courts those individuals and businesses we discover acting illegally.

Below are examples of recent prosecutions:

## EICH DIOGELU CHI

Nod tîm Diogelu'r Cyhoedd y cyngor yw sicrhau bod y fwrdeistref sirol yn lle iach, diogel a thegi i bobl fyw a gweithio ynddo ac ymweld.

Un o brif dasgau'r tîm yw datgelu'r gwir am yr unigolion a'r busnesau hynny sy'n gweithredu'n anghyfreithlon, a'u dwyn gerbron y cyngor.

Isod ceir enghreifftiau o erlyniadau diweddar:

### Trading Standards prosecutions

Erlyniadau Safonau Masnach

Defendant	Offence	Court Decision
Oliver Johnson of Newbridge.	11 July 2013 at Newport Magistrates Court. Sale of alcohol to two persons under the age of 18.	£150 fine, £717.56 costs to the Local Authority and £20 victim surcharge.Licensing Act 2003.
Lisa Davies of Churchhill Park, Caerphilly.	20 June 2014 at Newport Magistrates Court. Possession for supply of counterfeit clothing and electrical goods.	4 months imprisonment suspended for 12 months, Community Order - 60 hours unpaid work, £400 costs to the Local Authority, £80 victim surcharge and forfeiture of counterfeit goods. Trade Marks Act 1994.
Carl John Kilby of Oakdale.	20 June 2014 at Newport Magistrates Court. Possession for supply and the sale of counterfeit tobacco products. Possession for supply and the sale of tobacco products which did not comply with relevant Safety Regulations.	4 months imprisonment suspended for 12 months. Community Order - 100 hours unpaid work. £320 costs to the Local Authority, £80 victim surcharge and forfeiture of counterfeit tobacco products. Trade Marks Act 1194 and The Tobacco Products (Manufacture, Presentation and Sale) (Safety) Regulations 2002.

### Environmental health prosecutions

Erlyniadau'n ymwneud ag iechyd yr amgylchedd

Defendant	Offence	Court Decision
Louise Dennison. Millbrook Road, Pontllanfraith.	Failing to remove dog's faeces on Springfield Park, Pontllanfraith on the 7 February 2014. The case was held at Newport Magistrates Court on 18 July 2014.	Found guilty in her absence and was fined £200, ordered to pay costs of £120 and a victim surcharge of £20.  Dog Fouling of Land Act 1996.
Tim Davies of Sunnybank Road, Blackwood.	Appeared at Newport Magistrates' Court on Monday 7 July charged with breach of duty of care allowing waste under his control to be deposited on land, namely Tonypistyll Road, Pentwynmawr in February 2013.	Pleaded guilty. He was issued with £400 fine, £338.47 costs, £40 Victim surcharge.  Environmental Protection Act 1990.
Shamin Akhtar Khan of Aberdare.	The defendant did not attend Newport Magistrates Court on 20th June 2014.  Breaching the Housing Act 2004 sections 20, 21 and 235.	The case was proven in his absence. He was found guilty of two offences and ordered to pay a £1,000 fine for each of the offences.  Also ordered to pay £220 costs and a £100 victim surcharge. Housing Act 2004.

To view the full list, visit [www.caerphilly.gov.uk/prosecutions](http://www.caerphilly.gov.uk/prosecutions)  
Prosecution results are provided for a limited period to promote the openness of the council's actions to local residents. Information provided must not be reused in any form without the agreement of CCBC.

**Gellir gweld y rhestr yn llawn ar [www.caerffili.gov.uk/erlyniadau](http://www.caerffili.gov.uk/erlyniadau)**  
Caiff canlyniadau erlyniadau eu dangos am gyfnod cyfyngedig i ddangos i drigolion lleol bod y cyngor yn gweithredu mewn modd agored. Ni ddylid aildefnyddio gwybodaeth mewn unrhyw fodd heb ganiatâd Cyngor Bwrdeistref Sirol Caerffili.