

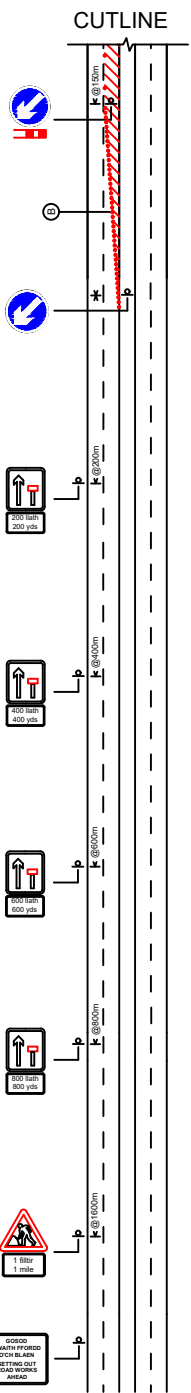
KEY

Road closed area

Lane closure area

Diversion route

A469 North
bound advance
signing detail



Coning Detail

DETAIL B

1.5m (3m relaxation)

Traffic cones (45° tapers have 1.2m spacing, no relaxations)

N.B. During darkness, warning lights to BS EN 12352:2006 should be provided in accordance with table A1.3 (Appendix 1)

On motorways and all purpose dual carriageways with hard shoulders on which national speed limit applies, 1m cones will be required for both standard works and works for which relaxations may be applied, for both lead in tapers and the facing wall on a lane change

DETAIL C1

9m

750mm or 1m high traffic cones

N.B. During darkness, warning lights to BS EN 12352:2006 should be provided in accordance with table A1.3 (Appendix 1)

For relaxation to Detail C1 see table A1.3 (Appendix 1)

DETAIL D

18m

Traffic cones 750mm or 1m high

N.B. During darkness, warning lights to BS EN 12352:2006 should be provided in accordance with table A1.3 (Appendix 1)

Detail D only applies to relaxation cases, see table A1.3 (Appendix 1)

Client:
Tarmac

Rev.	Des.	Chk.	App.	Description.	Date.

Project:
A469
Ysbyty Ystrad Fawr,
Ystrad Mynach

Drawing:
Traffic
management
arrangement
South bound

Drawing no: SNLT01 0177_08		Revision: .	
		Scale: NTS	
Drn:	JB	App:	
Chk:	AJC	Date:	04/07/17