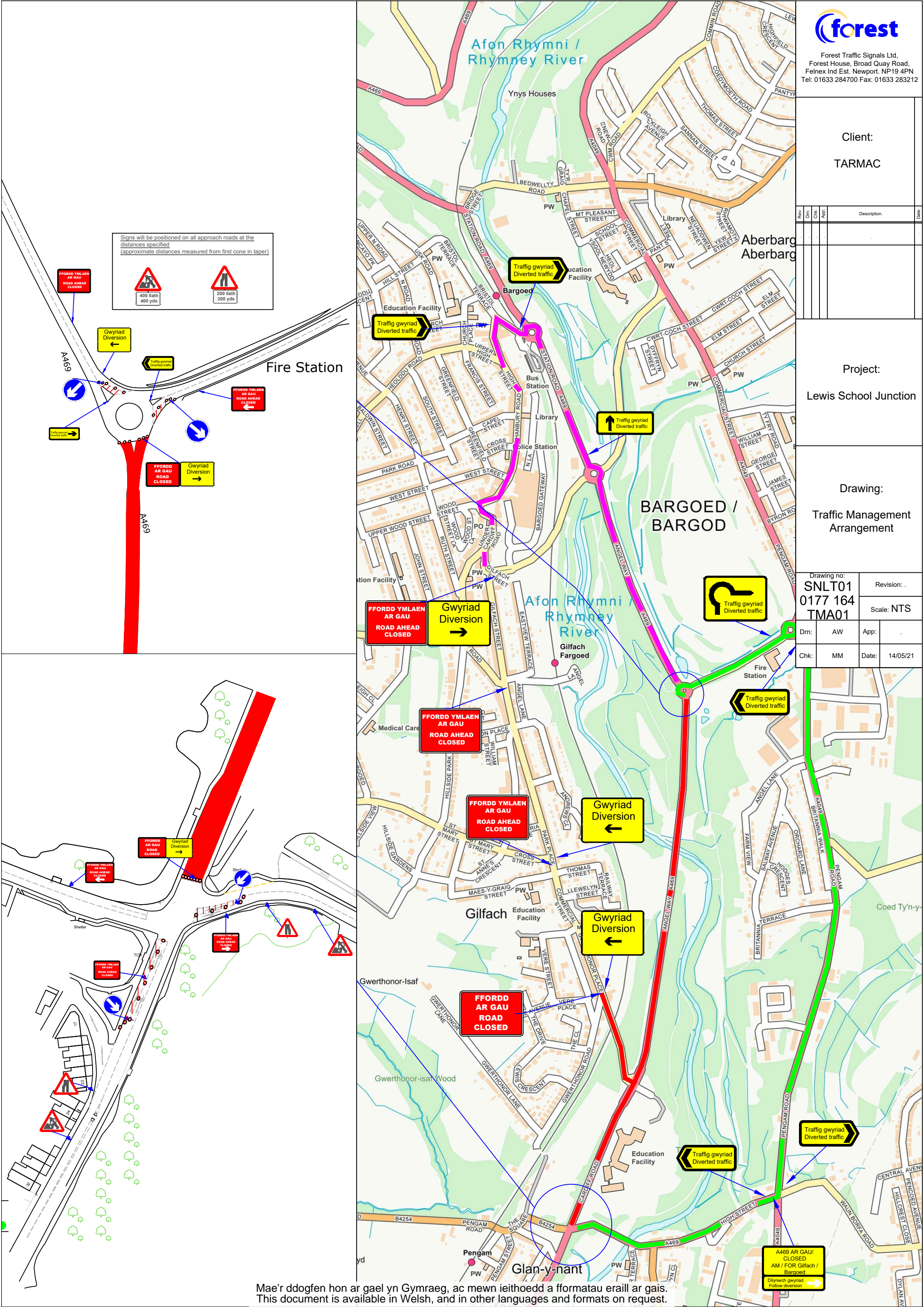


Client:  
**TARMAC**

Project:  
**Lewis School Junction**

Drawing:  
**Traffic Management Arrangement**

Drawing no: <b>SNLT01</b>		Revision: .	
0177 164		Scale: NTS	
TMA01			
Dm:	AW	App:	
Chk:	MM	Date:	14/05/21



Signs will be positioned on all approach roads at the distances specified (approximate distances measured from first cone in taper)



Gwyrriad Diversion

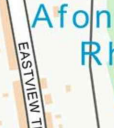


Fire Station

FFORDD YMLAEN AR GAU ROAD CLOSED



FFORDD YMLAEN AR GAU ROAD AHEAD CLOSED



FFORDD YMLAEN AR GAU ROAD AHEAD CLOSED



FFORDD AR GAU ROAD CLOSED



A469 AR GAU / CLOSED AM / FOR Gilfach / Bargoed

