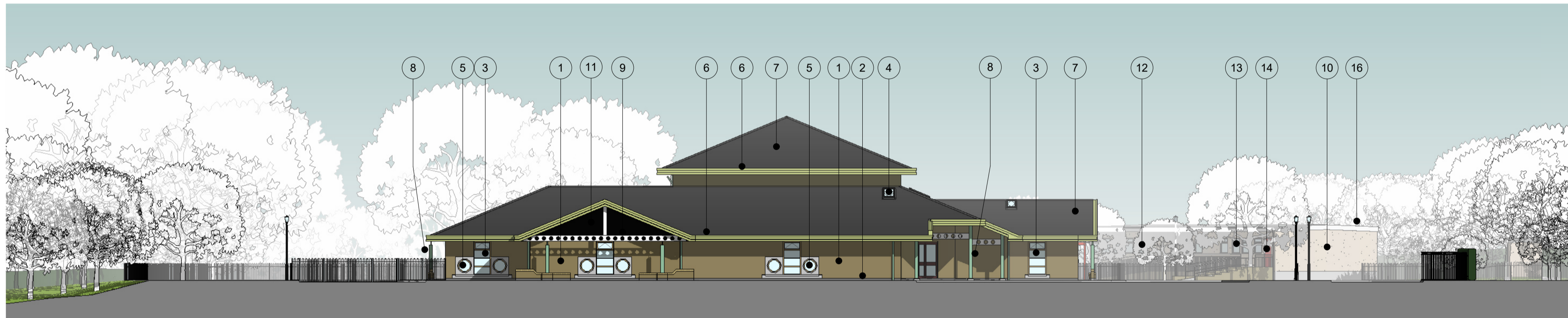




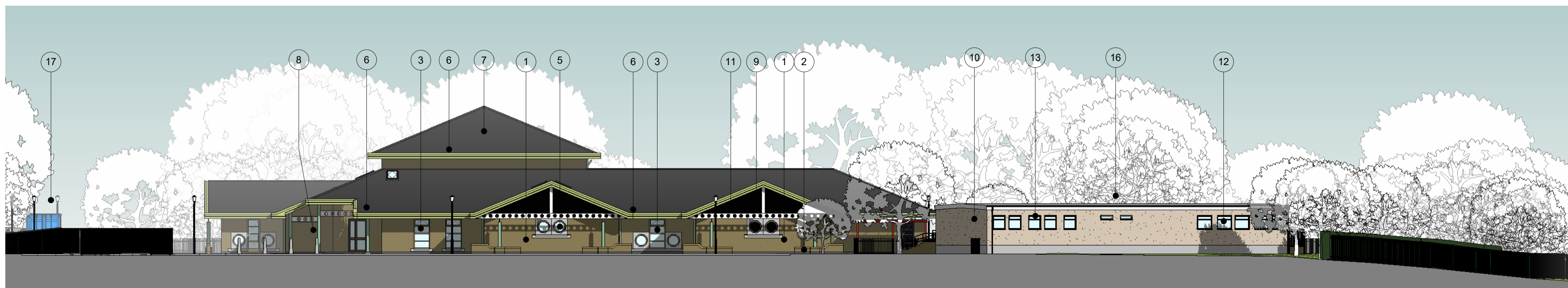
Existing East Elevation
1 : 200



Existing North Elevation
1 : 200



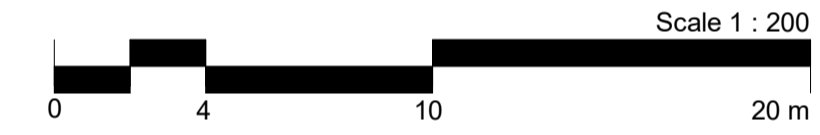
Existing South Elevation
1 : 200



Existing West Elevation
1 : 200

Materials Key:-

- 1 Buff multi brick with brown mortar
- 2 Staffordshire blue bricks below DPC
- 3 Timber stained windows/screens/doors with precast concrete cills
- 4 Timber rooflights
- 5 Timber bullnose windows in precast concrete surround
- 6 Aluminium gutters and downpipes - olive green
- 7 Artificial slate roof
- 8 Feature steel work - dark green
- 9 Feature steel work - white
- 10 Beige render
- 11 Metal louvres - white
- 12 Aluminium Windows - silver
- 13 uPVC windows
- 14 Timber doors
- 15 uPVC door - white
- 16 Felt roof with white uPVC fascia and black rainwater goods
- 17 Metal shipping container - blue



rev	date	amendment	drawn	chckd
Building Consultancy, Ty Penallta, Tredomen Park, Ystrad Mynach, Hengoed, CF82 7PG Tel: 01443 815588 Head of Land and Property Services: Ben Winstanley MRICS				
drawing status				
Preliminary <input checked="" type="checkbox"/>			Planning <input type="checkbox"/>	
project title				
Llanfabon and Llancaeath Amalgamation Llanfabon Infants School, Bryncelyn Avenue, Nelson, Treharris, CF46 6HL				
drawing title				
Existing Elevations				
date	scale	drawn	checked	
29/11/22	1 : 200	CY	JCH	
project no.	drawing no.	rev.		
4660	P03			