



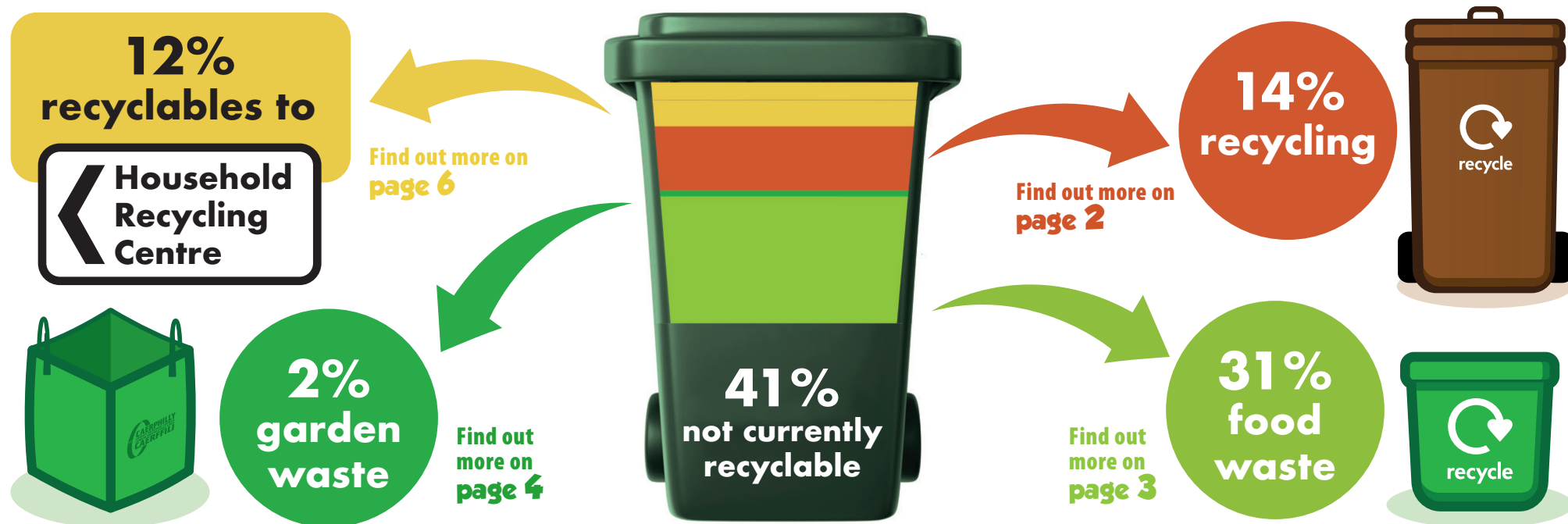
We are currently on a mission to tackle climate change and boost recycling rates, but we need your help.

Our county borough produces the highest volume of waste, per person, in all of Wales. In 2022 we generated over 97,000 tonnes of waste – that could fill the Principality Stadium pitch 8 metres high!

But if we work together to ensure that our things are put into the correct bins, we can reach and exceed Welsh Government's recycling target of 70%.

We need your help

59% of what goes into our green bins in Caerphilly actually could be recycled!



Find out how you can help:

✉ recyclingwards@caerphilly.gov.uk

☎ 01443 866533

🌐 <https://www.caerphilly.gov.uk/rubbish-bins>



Kerbside Recycling

Where your recycled products go

The contents of your brown recycling bin is taken to a Material Reclamation Facility (MRF). At the MRF, all the mixed recycling is sorted and separated into different types of materials by hand or machine (or both) before being sent to manufacturers who make it into new products. Once materials have been sorted, recycled materials become valuable commodities in the worldwide market.

What can be recycled at home?

On average, a quarter of the contents of each brown recycling bin contains general waste which should be placed in the green general waste bin. Your brown recycling bin or recycling box is to be used for all clean recyclable materials.

YES Please:

✓ Paper

✓ Plastic

✓ Glass

✓ Cans

✓ Cardboard



If you have a brown recycling bin or recycling box, items should NOT be bagged but should be cleaned and placed loosely in your bin or box. If you do not have a recycling bin or box, or if you have additional recycling, this should be left in clear plastic bags for collection.



One contaminated bin puts the whole load at risk of rejection which negatively affects our recycling rates and the environment, therefore bins deemed to be contaminated with items that cannot be recycled will not be emptied.

For more information about what items can go into your brown recycling bin scan the QR code.



Recycling plastic

We all know that plastic pollution is a real issue, but with so many different types of plastic it can be difficult to know what goes where, so here is a reminder of what plastics you can recycle at home:

YES Please:

✓ Yoghurt pots

✓ Chocolate or sweet tubs

✓ Food pots and tubs for soup / noodles

✓ Tubs containing cleaning products

✓ Meat trays

✓ Cake trays

✓ Butter & margarine tubs



✓ Ready-meal and take away containers

✓ Punnet style containers that hold fruit or vegetables

✓ Pots containing skin care and hair products

NO Thanks:

✗ Paint pots - can be recycled at your local Household Recycling Centre

✗ Plastic toys - can be recycled at your local Household Recycling Centre

✗ Polystyrene e.g. packaging inserts

✗ Plastic blister packs for tablets and capsules

✗ Plastic packaging & carrier bags - can be recycled at dedicated supermarkets

✗ Pots, tubs or trays that are black or brown plastic

How to recycle plastic

Use left-over washing up water to rinse your plastic pots, tubs and trays before recycling. Left-over food residue can contaminate other recyclables.

Leave on any labels and lids but remove any plastic film and absorbent pads and put them inside your bag or bin for non-recyclable waste. Recycle any cardboard sleeves with your cardboard.

Remove any film lids from pots or trays and recycle these with plastic packaging and bags at dedicated supermarkets. Alternatively, place them inside your bag or bin for non-recyclable waste.



Food Waste Recycling

Where your food waste goes

In Caerphilly county borough our recycled food waste is processed through Anaerobic Digestion.

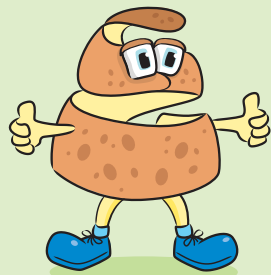
Anaerobic Digestion is a natural process that sees food and cattle slurry mixed together. This product is then added to a large, oxygen-free tank called an anaerobic digester, and is the perfect diet for the microbes inside to produce methane biogas.

The methane biogas is then burnt to create renewable electricity which can be used to power our communities.

When this process is complete we are left with natural fertilizer called digestate, which is used on farm land to grow energy-rich grass for the cattle.

And the cycle continues.

Pete Peel says...



Did you know the food waste recycled by Caerphilly County Borough currently generates enough energy to power 2000 homes?

How to Recycle your food waste

Caerphilly county borough council offers a FREE weekly food waste recycling collection service from all 80,000 households.

Residents should have a FREE 5 litre kitchen caddy to store food waste internally and a FREE 23 litre outdoor caddy.



Most people put a liner in their kitchen caddy to keep the food waste contained. You can line your caddy with newspaper (like this one), compostable liners or other bags such as bread or potato bags.

To order your free food waste caddy scan the QR code or call 01443 866533.



What food can be recycled?

YES Please:

- ✓ Fruit and vegetables
- ✓ Meat and fish
- ✓ Leftover food / Plate scrapings
- ✓ Out of date food
- ✓ Takeaway food
- ✓ Bread and pasta
- ✓ Cereals and rice
- ✓ Tea bags
- ✓ Dairy products
- ✓ Egg shells
- ✓ Bones
- ✓ Dog and cat food

Mash for cash

Did you know you could be in with the chance of winning £500 EACH MONTH.

14 lucky food waste recyclers have already won – will you be next? Put your food waste caddy out for collection to be automatically entered!

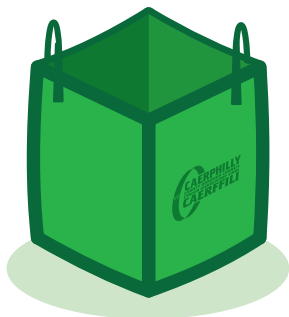
Scan the QR code above for more information.





Garden Waste Recycling

Garden waste, like food waste, is collected every week and should be put out for kerbside collection using any garden sack.



YES Please:

- ✓ Leaves
- ✓ Dead flowers
- ✓ Small shrubs
- ✓ Weeds
- ✓ Grass cuttings
- ✓ Twigs
- ✓ Hedge cuttings



NO Thanks:

- ✗ Japanese knotweed & other invasive species
- ✗ Food
- ✗ Earth clods
- ✗ Stones
- ✗ Rubble
- ✗ Soil
- ✗ Wood
- ✗ Bulky garden waste such as logs and branches
- ✗ Building materials



For more information about how to dispose of these items scan the QR code.



Home composting

Home composting diverts organic waste from our waste streams. This helps to reduce the build-up of greenhouse gasses such as methane.

Compost is nutritious and can provide an excellent soil conditioner for your garden. It is free and is a complete fertiliser for all plants and vegetables. It provides basic plant food and a soil conditioner called humus. Thus, improving both soil fertility and structure.

Compost can be used instead of harmful fertilisers and peat. You can buy compost bins from garden centres, DIY shops and online retailers.



Caru Cymru Litter Picking Hubs

Fancy cleaning up your local area but don't have the right kit?

Caru Cymru now have 184 Litter Picking Hubs open across Wales to support your activities on the ground in a sustainable way.

These hubs offer all the equipment you need to carry out a safe clean-up to keep your local area loved and cared for.

The kit includes litter pickers, hi-vis vests, rubbish bags and hoops – essential for keeping your bags open in breezy conditions. Just head to one of our Caru Cymru Litter Picking Hubs and borrow the kit FOR FREE!

Find out more: <https://keepwalestidy.cymru/caru-cymru/litter-picking-hubs/>

Repair

Everything we buy will eventually break or wear out. When this happens, we too often get rid of the broken or old item, which produces a lot of waste, but it doesn't need to be this way.

Most items can be easily fixed, often for very little money. Why not giving your loved possessions a second life, save some money and move Wales to a circular economy?

Find local repair businesses: <https://www.caerphilly.gov.uk/repair>

Business (Workplace) Recycling Regulations

From 6 April 2024 it will become law for all businesses, charities and public sector organisations in Wales to separate their waste for recycling. This will improve the quality and quantity of how we collect and separate waste.

Find out more: <https://businesswales.gov.wales/news-and-blogs/news/new-law-workplace-recycling>



Refuse Collection

Once your food waste, garden waste and mixed recycling have been collected you should have very little waste left in your green refuse bin.

Refuse should be placed in your wheelie bin at your normal collection point by 5:30am on your collection day. We will not collect any additional refuse that will not fit in your bin with the lid closed.

If you do not have a bin, we will accept a maximum of 4 black bags every 2 weeks.

YES Please:

- ✓ Disposable nappies
- ✓ Broken glass
- ✓ Carrier bags
- ✓ Broken toys
- ✓ Cooking oil
- ✓ Polystyrene
- ✓ Plastic film
- ✓ Pet waste
- ✓ Cold ash

NO Thanks:

- ✗ Clothing
- ✗ Anything that can be recycled
- ✗ Food waste
- ✗ Garden waste
- ✗ Stones, rubble or soil
- ✗ Building materials
- ✗ Car parts or batteries
- ✗ Engine oil, paint or chemicals
- ✗ Tree branches
- ✗ Hazardous waste (example: asbestos & clinical waste)
- ✗ Hot ashes - Please allow them to cool
- ✗ Anything too large to fit easily in the bin.

For more information about how to dispose of these items scan the QR code.



Your Bin Collection Days

Our range of kerbside collections and collection frequencies are:

Food waste - Weekly

Garden waste - Weekly

Recycling - Weekly

Refuse - Fortnightly

To check your bin collection day and download a calendar to your device scan the QR code or call 01443 866533.

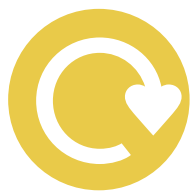


Collections are not affected by most bank holidays, but we do not operate on Christmas Day or New Years Day.

To ensure you are always informed of any collection date changes sign up to receive email updates at:

<https://public.govdelivery.com/accounts/UKCAERPHILLY/subscriber/new>





Reuse Resources

Caerphilly county borough has a wide range of resources dedicated to helping residents reuse their pre-loved goods.

Penallta Reuse Shop

Penallta Reuse Shop, in partnership with South Wales based charity, Wastesavers, offers the opportunity to divert good condition, fit-for-purpose items from the waste stream and get them into the hands of people who can use them, for a great price.

If you have household items that are no longer of use to you but are too good to tip, they can be donated to Penallta Reuse Shop. Simply take your goods into the shop and they will do the rest, ensuring that your unwanted items are re-homed.

All profits raised through Penallta Reuse Shop are divided equally between the Wastesavers charity work and Caerphilly county borough Council's Mayor's charity.

Penallta Industrial Estate,
South Road, Hengoed CF82 7ST

Website: <https://www.caerphilly.gov.uk/penallta-reuse-shop>

Facebook: @ThePenalltaReuseShop



The Furniture Revival

The Furniture Revival is run by Groundwork Caerphilly and aims to promote waste minimisation and reuse throughout Caerphilly borough.

The Furniture Revival will collect unwanted furniture and certain types of electrical equipment (no gas appliances) free of charge from properties across the Borough. The items are then taken to The Furniture Revival's workshop and repaired/restored so that they can be sold on to residents on low incomes.



The social enterprise offers free collections and delivery within Caerphilly borough.

The Furniture Revival,
Unit 21 Lawn Industrial Estate
Rhymney NP22 5PW

Opening hours are Monday to Friday from 9am to 4pm (Closed bank holidays)

Phone: 01685 846830

Website: www.thefurniturerevival.co.uk

Facebook: @FurnitureRevivals



ToyBox Project

ToyBox Project takes in your unwanted new and used toys and rehomes them with families and organisations in need. They work with numerous partners to ensure that toys go to those in need, such as schools, play groups, the NHS, various community groups and families in need. This helps keep toys out of landfill and put them into the hands of those who need them.



They operate from a toy warehouse in Bedwas and have a network of drop off points in Barry and Caerphilly.

ToyBox Project, 4a Swanbridge Court,
Bedwas House Industrial Estate,
Bedwas, Caerphilly CF83 8FW

For more information, to make a donation or to volunteer, please visit:

Website: www.ToyBoxProject.co.uk

Facebook: @ToyBoxProject



Caerphilly Uniform Exchange

Caerphilly Uniform Exchange is a local project aimed at reducing waste and saving families money through the recycling of: School uniforms, prom wear and sports kits.

Caerphilly Uniform Exchange,
43 Attlee Court, Caerphilly CF831QU



Caerphilly
**Uniform
Exchange**





Household Recycling Centres

What are Household Recycling Centres?

Caerphilly County has one the highest number of Household Recycling Centres in Wales, 6 throughout the borough.

Household Recycling Centres are supervised facilities where residents of the County Borough can take household materials for recycling and disposal. To prevent misuse of these sites, all residents must present a valid driving licence to access your local Household Recycling Centre.

It is important that the materials you deliver to these sites are deposited in the correct container. If you are unsure, ask a member of the site staff.

What can be disposed of at Household Recycling Centres?

YES Please:

- ✓ Glass
- ✓ Cans
- ✓ Paper
- ✓ Textiles
- ✓ Shoes (in pairs)
- ✓ Oil
- ✓ Scrap metal
- ✓ Cardboard
- ✓ Household batteries
- ✓ Car batteries
- ✓ Garden waste
- ✓ Plastic bottles
- ✓ General household waste
- ✓ Wood
- ✓ Televisions / computer monitors.

If you wish to use a van, trailer or commercial type vehicle to dispose of waste at Household Recycling Centres you must get a permit and there might be a charge depending on the type of waste you are disposing.



For more information about Household Recycling Centres and permits scan the QR code.



Bulky Item Collection

If your large items are not suitable to be donated to Penallta Reuse Shop or Furniture Revival and cannot be repaired, we offer a chargeable Bulky Item Collection service.

YES Please:

- ✓ Fixtures and fittings (internal & external)
- ✓ Miscellaneous household items (for example baby gates, ironing board and fish tank)
- ✓ Household furniture
- ✓ White goods (excluding fridges, freezers & fridge freezers)
- ✓ Electrical items

NO Thanks:

- ✗ Asbestos
- ✗ Hot tubs
- ✗ Chemical drums
- ✗ Clinical waste
- ✗ Boilers, gas bottles or oil tanks
- ✗ Broken glass
- ✗ Building or construction waste from Commercial Premises
- ✗ Hazardous waste
- ✗ Trade waste

For more information and to book a Bulky Item Collection scan the QR code.



Where is my local Household Recycling Centre?

- **Aberbargoed Household Recycling Centre**
Bowen Industrial Estate, CF81 9EP
- **Caerphilly Household Recycling Centre**
Trehir, CF83 3RP
- **Crosskeys Household Recycling Centre**
Full Moon Industrial Estate, NP11 7BD
- **Penallta Household Recycling Centre**
Penallta Industrial Estate, CF81 7QZ
- **Penmaen Household Recycling Centre**
Penmaen Industrial Estate, NP12 2XZ
- **Rhymney Household Recycling Centre**
Lawn Industrial Estate, NP22 5PW



A-Z Waste Guide

Here are some items commonly placed in the wrong bins - did you know these?

A - Aerosols

Empty deodorant cans can be placed in the recycling bin. Empty spray paint cans should be placed in the general waste bin.



B - Batteries

Portable batteries should be taken to your local Household Recycling Centres or to dedicated battery recycling points in supermarkets. To help minimise waste why not try reusable batteries.



C - Crisp packets

Crisp packs should be disposed of in your general waste bin.



D - Dog waste

Dog waste should be disposed of in your general waste bin or in one of the dedicated dog waste bins located throughout the borough.



E - Egg shells

Egg shells can be recycled in your food waste recycling caddy.



F - Foil

Clean foil food trays, clean pie cases and clean kitchen foil can be placed in the recycling bin. Any foil with food remains should be disposed of in your general waste bin.



G - Glass

Glass bottles and jars can be recycled in your recycling bin.



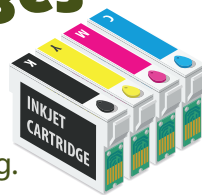
H - Hazardous waste

This should be dealt with carefully. If this cannot be taken to your local Household Recycling Centre you will need to arrange disposal with a reputable, licensed private company.



I - Ink cartridges

Some schools recycle ink cartridges – alternatively some manufacturers will take back used cartridges for recycling.



J - Junk mail

Contact the mailing preference service to stop unwanted junk mail. If you still receive it, it can be placed in the recycling bin.

K - Keys

Can be recycled as scrap metal at the Household Recycling Centres.



L - Lightbulbs

Lightbulbs and florescent tubing should be taken to your local Household Recycling Centre.



M - Magazines

Magazines can be recycled in your recycling bin.

N - Nappies

Nappies should be disposed of in your general waste bin. To help minimise waste why not try reusable nappies.



O - Oil

Engine oil should be disposed of at your local Household Recycling Centre. Cooking oil should be taken to Penallta Household Recycling Centre.



P - Plastic packaging

Soft plastics such as carrier bags and packaging can be recycled at dedicated supermarkets or should be disposed of in your general waste. Don't forget to reuse your bags for life to minimise waste.



Q - Quilts

Quilts should be taken to your local Household Recycling Centre.



R - Rubble

Rubble can be taken to your local Household Recycling Centre.



S - Shoes

Shoes can be donated to charity shops or clothes banks.



T - Tetra Pak

Tetra Pak can be taken to Crosskeys Household Recycling Centre or can be disposed of in your general waste bin.



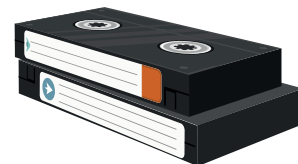
U - Umbrellas

Umbrellas should be disposed of in your general waste bin.



V - Video cassettes

Video cassettes should be disposed of in your general waste bin.

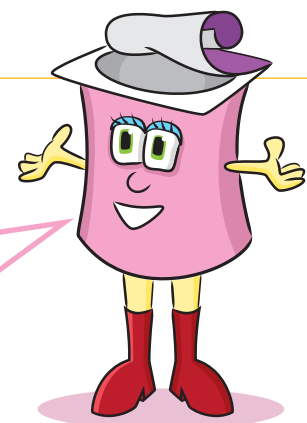


W - Wrapping paper

Can be reused or recycled in your recycling bin. Shiny foil-type wrapping should be placed in the general waste bin.

Y - Yoghurt pots

Most yoghurt pots can be recycled in your recycling bin.



Polli Pot says ... For more info visit:

<https://www.caerphilly.gov.uk/waste-guide>