



Transforming YOUR Services

Caerphilly County Borough Council, like many other councils across Wales, continues to face significant financial challenges, so in order to deliver savings we need to change and improve the way we do things in future.

The council is facing a £66million budget shortfall over the next 3 years, so in recent months we have embarked on a major transformation programme and a lot of work is being done to develop a range of ambitious proposals to rethink and reshape the way we do business.

The ongoing financial pressure, coupled with increasing demand for our services, means that we need to do things differently if we are to best meet the needs of local people.

We are reviewing our services to identify efficiencies, as well as using fewer buildings, being more business-minded and making our services more accessible.

It is important that residents get the chance to have their say in this process so we will engage with the community to understand your needs and provide the right support.

I fully appreciate that this process isn't going to be easy, but it is absolutely the right thing to do and you, our local community, deserve nothing less.

By working together as Team Caerphilly, we can create a better future for everyone and I will continue to keep you updated about our exciting plans.



Cllr Sean Morgan
Leader of the Council

See page 5 for more information about the budget and our plans for positive change.

Caerphilly County Borough Corporate Plan Well-being Objectives 2023-2028

The Corporate Plan sets out our direction, priorities and objectives for the next five years. The new well-being objectives help us shape services, target our resources and prioritise our efforts as we continue to deliver the services our communities need.

In common with other public service organisations across Wales, we continue to face significant financial challenges, but we remain committed to delivering sustainable services that meet the present and future needs of our communities.

We know we must adapt to meet the challenges we face, focusing on flexibility and finding different ways to deliver what our communities need, when they need it. By working together, we can create a better future for all our residents.

If we are to successfully deliver the key objectives set out within the Corporate Plan, whilst operating within this challenging landscape, it is clear we need to rethink and reshape what we do and how we do it.

We will achieve this through the delivery of the biggest change programme this Council has ever faced. A challenging, complex but really exciting transformation programme called 'Mobilising Team Caerphilly' and this innovative approach is now gathering pace across the organisation as we begin to see positive progress being made.

This isn't going to be easy, but this is absolutely the right thing to do as our communities deserve nothing less.



Cllr Sean Morgan
Leader of the Council

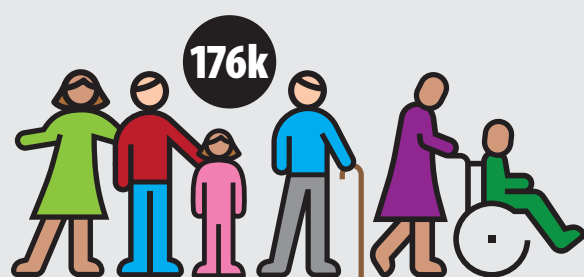


Christina Harrhy
Chief Executive

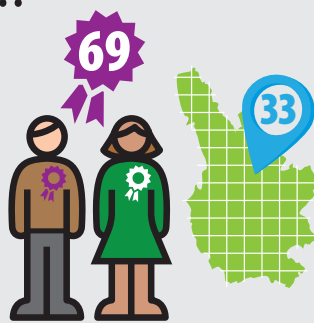
Tîm Caerffili
Yn Well gyda'n Gilydd



A BIT ABOUT US...



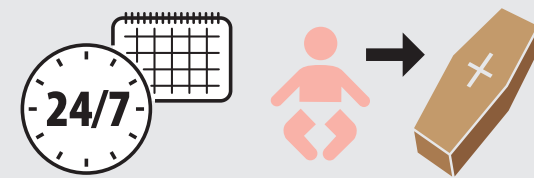
We provide services to approximately 176,000 residents.



We have 69 elected Councillors representing 33 wards.



We support 76,000 households.



We deliver over 600 services 24/7 from the cradle to the grave.

We are the 5th largest local authority area in Wales.



We cover 108 square miles (28,000 hectares) in the heart of South Wales.



We employ just over 8,000 staff.

Our Well-being Objectives for 2023 to 2028



Objective 1 Enabling our children to succeed in education.	Objective 2 Enabling our residents to thrive.	Objective 3 Enabling our communities to thrive.	Objective 4 Enabling our economy to grow.	Objective 5 Enabling our environment to be greener.
We will have built effective leadership to maintain our aspiration for all learners to achieve high standards and make strong progress on their educational journey.	We will have responded to our aging demographic including creating age friendly communities.	Our physical infrastructure and digital connectivity will have improved to help people access towns, communities and services.	We will have worked towards ensuring we have the necessary infrastructure in place to enable our economy and communities to grow.	We will have worked with our residents to meet our statutory targets in relation to waste reduction, reuse and recycling.
We will have safe and inclusive provision that will support the progress of vulnerable and disadvantaged learners.	We will have met the needs of our most vulnerable children and adults.	We will have worked with partners to improve access to public and other alternative modes of transport to keep towns connected and enhanced active travel opportunities between communities.	We will have worked in partnership to support businesses with a range of interventions aimed at stimulating the local economy.	We will have reduced our operational carbon emissions to become a net zero carbon local authority by 2030.
We will have improved literacy (English and Welsh), numeracy, digital, physical and wider skills to provide our learners with better life chances.	We will have enabled the Community and Voluntary Sector to support our residents.	We will work with partners from across the Public Service Board towards improving the well-being and healthy life expectancy of our communities.	We will have a stronger relationship with our Business Community through town centre regeneration.	We will have helped our communities transition to low carbon transport.
Learners will have received effective support to ensure that post-16 destinations are appropriate and sustainable.	We will have supported residents through the cost-of-living crisis.	We will have created conditions that enable our communities to be healthier and more active.	We will continue to work with the Cardiff Capital Region (CCR) to increase the availability of quality employment opportunities in the area and enhance our economy.	We will have promoted and explored green energy opportunities for the council, communities and businesses.
We will have built new and refurbished schools and settings, creating learning environments that engage and inspire.	We will have built new Council houses, provided more affordable homes, brought empty properties back into use and worked towards the prevention of homelessness.	We will have attractive open spaces that enhance quality of life.	Our local workforce will have the skills that employers need locally and regionally.	We will have protected and enhanced our natural environment to improve biodiversity and make us more resilient to climate changes.

View the full plan on the CCBC Website:

www.caerphilly.gov.uk

For more information contact:

Ros Roberts - Business Improvement Manager

t: 01443 864238 e: roberr@caerphilly.gov.uk

We will have set climate standards for new build Council Homes and worked to improve the green energy credentials and energy efficiency of our housing stock.

HOW WILL WE DELIVER OUR WELL-BEING OBJECTIVES?

The whole Council - our political leaders, our Corporate Management Team, and our employees - have a responsibility to deliver the Well-being Objectives and to work towards the outcome statements on behalf of the county borough.

Our Well-being Objectives have been developed with the guidance of the political administration and in consultation with the public. They cut across the whole of the Council and their delivery is the responsibility of the Corporate Management Team.

Whilst they are defined as a set of outward facing Objectives, the delivery of them together with the mechanisms to achieve them are firmly rooted in the day-to-day delivery of Council services.

Reshaping the Council to meet the Challenge

We embarked upon our journey to transform the Council and established our Team Caerphilly - better together ethos in 2020. This has provided us with a sound basis upon which to build our whole organisation transformation programme. Over the next few years, we will reshape and refocus how we operate as a council and how we deliver services, with a focus throughout upon meeting the needs of our citizens. Our immediate efforts will concentrate upon:

- Improving our customer journey
- Transforming our internal ways of working to deliver efficiencies
- Collaborating with our partners to become more effective
- Ensuring we can adapt to changes and shift our services to new ways of working quickly
- Making sure our schools, social housing, leisure and social care sites are fit for the future
- Continuing to develop our physical infrastructure to regenerate the county borough

Investing in YOUR community



A major strategy aimed at encouraging more people to get more active across the Caerphilly county borough has delivered significant benefits in its first 5 years.

Since its implementation, the strategy has delivered almost £3 million of investment in an impressive range of sport and leisure facilities, including 5 new dual use 3G football and rugby pitches, an athletics hub, a hockey hub, and the refurbishment and redevelopment of fitness suites in 2 leisure centres.

Caerphilly council's Sport and Active Recreation Strategy 2019 - 2029 is a 10 year plan which was approved back in 2018.

Some of the investment resulting from CCBC's Sport and Active Recreation Strategy to date includes:

- **£390,000** - New hockey hub at Sue Noake Leisure Centre, Ystrad Mynach and a new 3G pitch at Idris Davies School.
- **£315,000** - New 3G Pitch, fencing, lighting and changing rooms at Bedwas Leisure Centre.
- **£755,000** – New Athletics Hub in Oakdale adjacent to Rhiw syr Dafydd Primary School.
- **£110,000** – New 3G pitch at St Cenydd Community School.



- **£90,000** – New 3G pitch at Lewis School Pengam.
- **£90,000** – New 3G pitch at Ysgol Gyfun Cwm Rhymini.
- **£73,000** - Cruyff Court Aaron Ramsey initiative at Trinity Fields Special School.
- **£15,445** - Nelson Handball court resurfacing programme.
- **£875,000** investment at Newbridge Leisure Centre (fitness suite, dance & cycling studio, pool equipment and changing room refurbishment).



- A **£100,000** refurbishment of the Fitness Suite at Heolddu Leisure Centre.
- **Coming Soon!** A new **£33.6 million** Leisure and Wellbeing Hub in Caerphilly.
- **Coming Soon!** A new Centre for Vulnerable learners on the former Pontllanfraith Comprehensive site, featuring new community sports facilities.
- **Coming Soon!** Upgraded 3G pitch at Newbridge Leisure Centre and Mini 3G pitch at Abercarn Primary school.



The strategy also covers a range of other initiatives that have helped improve community wellbeing such as National Exercise Referral scheme, Sports Development initiatives, Families First targeted projects, Welsh Government Sustainable Communities for Learning, Welsh Government Community Focussed Schools and healthy walk programmes etc

Not just potholes and bin collections!

Caerphilly Council currently has an annual net revenue budget of £439 million and this significant sum of money is used to deliver a wide range of services to support the needs of people of all ages across the county borough.

Local councils are there to support residents from the cradle to the grave. Examples of this include: birth registration, schools and school catering, youth services, further education, sport and leisure, marriages, housing support, public protection, highways, planning, waste and recycling, business support, social care, Meals on Wheels and bereavement services. These are just a few examples of the hundreds of services we deliver to the community 24/7."

Where does the money come from?

Many people believe that Council Tax pays for the services delivered by the council, but this element makes up only 18.9% of the council's net revenue budget.



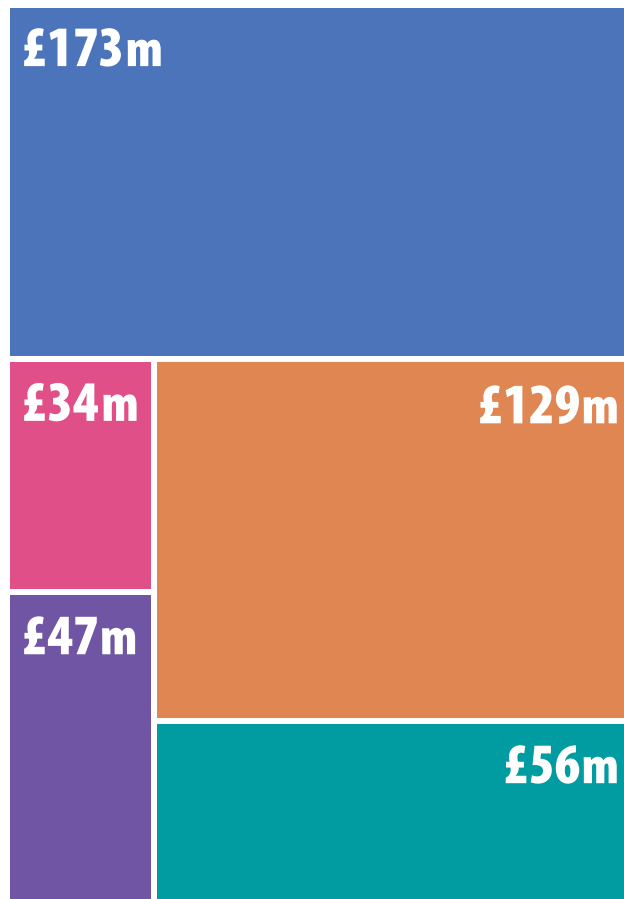
Here is the full breakdown of where the money came from in 2023/24:

Financial contribution from Welsh Government	£340m	77.5%
Council Tax income	£83m	18.9%
Use of Reserves	£16m	3.6%

How is the money spent?

The vast majority of the council's net revenue budget is spent on education (39%) and social care (29%).

- Education & Lifelong Learning
- Social Services
- Economy & Environment
- Corporate Services
- Miscellaneous Finance



What are reserves?

CCBC is often questioned about the amount of money it has in reserves, but it's important to point out that reserves are not just a pot of cash that the council is sitting on. The vast majority of reserves are earmarked for specific use – such as building new schools or council houses – and this money cannot be used for anything else.

A smaller portion of reserves are not earmarked for specific projects and can be used for other purposes - such as to plug a hole in the budget - but once these reserves are gone, they are gone forever.



What is the budget situation looking like?

Over the next 3 years the council is facing a budget shortfall of around £66million.

Welsh Government recently announced details of the provisional financial settlement for 2024/25 and we were anticipating an increase of 2.7%. However, we are likely to receive 2.3% - so the funding gap for 2024/25 will now increase by an additional £1.5million.

In order to tackle this budget shortfall, the council is looking at ways to rethink and reshape the way it delivers many of its services to identify efficiencies and deliver improvements.

An exciting transformation programme, called Mobilising Team Caerphilly, will lead to a number of positive changes as transform service delivery, improve customer transactions and provide easier ways to access council services.

Community engagement will be a key part of this process, so watch this space for further information about how you can get involved and have your say.

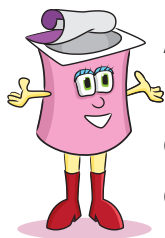
Team Caerphilly
Better Together





The way you use Household Recycling Centres is changing

From **12th February 2024** all residents must separate their recycling and non-recyclable waste at home, before visiting their local Household Recycling Centre.



Approximately 50% of what's put in general waste skips could be recycled! Let's SORT our waste to help reach our recycling target of 70% and tackle climate change.

TOP TIP

Bring any recycling in reusable boxes or containers to save time!

If you bring any waste to our Household Recycling Centres in bags, we will ask you to open them to ensure there are no recyclable items inside.

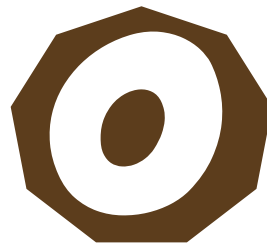


For more information please scan the QR code, visit www.caerphilly.gov.uk/recycling-centres or call 01443 866533

REMEMBER TO SORT IT:



Separate any recyclable materials from non-recyclable materials.



Organise your recycling into the correct containers.



Recycle everything you can.



Talk to one of our Household Recycling Centre operatives who are on hand to help.

Workplace recycling regulations

From 6 April 2024, it will become law for all businesses, charities and public sector organisations to sort their waste for recycling. The Welsh Government is introducing this law to improve the quality and quantity of how we collect and separate waste.

For more information and guidance visit: www.gov.wales/workplace-recycling

Reminder: Commercial waste is NOT PERMITTED in household bins, litter bins or at Household Recycling Centres. If CCBC collects your organisation's waste and recycling, we will write to you soon with more information about these changes.

What waste needs to be separated:

The following materials will need to be separated for collection, and collected separately:

- Food
- Paper and card
- Glass
- Metal, plastic and cartons
- Unsold textiles
- Unsold small waste electrical and electronic equipment (sWEEE)



What can be recycled at Household Recycling Centres?

Please ensure that you visit a Centre that can accept all of your household waste.

Aberbargoed

Bowen Industrial Estate, CF81 9EP

- ✓ Car batteries
- ✓ Cardboard
- ✓ Mattresses
- ✓ Paint
- ✓ Plastic bottles
- ✓ Textiles
- ✓ Scrap metal
- ✓ Fluorescent tubes
- ✓ Dismantled furniture
- ✓ Garden waste
- ✓ Household batteries
- ✓ Large domestic appliances
- ✓ Shoes (in pairs)
- ✓ Small domestic appliances
- ✓ Televisions / monitors
- ✓ Cans
- ✓ Foil
- ✓ Glass
- ✓ Oil
- ✓ Paper
- ✓ Plastic
- ✓ Rubble
- ✓ Carpets

Crosskeys

Full Moon Industrial Estate, NP11 7BD

- ✓ Asbestos
- ✓ Car batteries
- ✓ Cardboard
- ✓ Garden waste
- ✓ Mattresses
- ✓ Plasterboard
- ✓ Scrap metal
- ✓ Shoes (in pairs)
- ✓ Plastic bottles
- ✓ Fluorescent tubes
- ✓ Dismantled furniture
- ✓ Food & drink cartons
- ✓ Household batteries
- ✓ Small / Large domestic appliances
- ✓ Televisions / monitors
- ✓ Books
- ✓ Cans
- ✓ Engine Oil
- ✓ Glass
- ✓ Paint
- ✓ Paper
- ✓ Rubble
- ✓ Tetra Pak
- ✓ Textiles
- ✓ Gas bottles
- ✓ Carpets

Penallta

Penallta Industrial Estate, CF82 7ST

- ✓ Asbestos
- ✓ Cardboard
- ✓ Car batteries
- ✓ Garden waste
- ✓ Plasterboard
- ✓ Plastic bottles
- ✓ Scrap metal
- ✓ Fluorescent tubes
- ✓ Dismantled furniture
- ✓ Gas cylinders / bottles
- ✓ Household batteries
- ✓ Large domestic appliances
- ✓ Shoes (in pairs)
- ✓ Small domestic appliances
- ✓ Televisions / monitors
- ✓ Cans
- ✓ Foil
- ✓ Oil
- ✓ Paint
- ✓ Rubble
- ✓ Textiles
- ✓ Tyres
- ✓ Carpets

Caerphilly

Trehir, CF83 3RP

- ✓ Car batteries
- ✓ Cardboard
- ✓ Garden waste
- ✓ Mattresses
- ✓ Plastic
- ✓ Fluorescent tubes
- ✓ Dismantled furniture
- ✓ Household batteries
- ✓ Large domestic appliances
- ✓ Scrap metal
- ✓ Shoes (in pairs)
- ✓ Small domestic appliances
- ✓ Televisions / monitors
- ✓ Asbestos
- ✓ Glass
- ✓ Oil
- ✓ Paint
- ✓ Rubble
- ✓ Carpets

Penmaen

Penmaen Industrial Estate, NP12 2XZ

- ✓ Cans
- ✓ Garden waste
- ✓ Carpets
- ✓ Mattresses
- ✓ Plastic bottles
- ✓ Scrap metal
- ✓ Fluorescent tubes
- ✓ Dismantled furniture
- ✓ Household batteries
- ✓ Large domestic appliances
- ✓ Shoes (in pairs)
- ✓ Small domestic appliances
- ✓ Televisions/monitors
- ✓ Cardboard
- ✓ Glass
- ✓ Paint
- ✓ Plastic
- ✓ Rubble
- ✓ Textiles

Rhymney

Lawn Industrial Estate, NP22 5PW

- ✓ Car batteries
- ✓ Cardboard
- ✓ Garden waste
- ✓ Rubble
- ✓ Mattresses
- ✓ Plastic bottles
- ✓ Scrap metal
- ✓ Dismantled furniture
- ✓ Household batteries
- ✓ Large domestic appliances
- ✓ Shoes (in pairs)
- ✓ Small domestic appliances
- ✓ Televisions / monitors
- ✓ Cans
- ✓ Foil
- ✓ Glass
- ✓ Oil
- ✓ Paint
- ✓ Plastic

The Caerphilly Conversation

Have your say on the draft Waste and Recycling Strategy 2023-28 – 'To 70% and beyond'

Why the need to change?

Caerphilly, like all councils in Wales, is working towards a Welsh Government target for 'overall zero waste' by 2050. With that, come challenging recycling targets for councils.

The current target councils must meet is 64%, increasing to a 70% recycling target by 2024/25. Caerphilly's recycling performance is currently at 59% - well below the target set by Welsh Government.

This means the council is at real risk of having to pay significant fines (around £200,000 per percentage point below the target) for not reaching the performance targets.

Caerphilly currently:

- Has the highest level of residual waste (refuse) per person in Wales.
- Almost half the contents of our residual waste (refuse) bins contain material that could be recycled.

Quite simply, doing nothing is not an option.

The draft Waste and Recycling Strategy has been developed to outline how the Council, working with its residents could meet the Welsh Government statutory recycling targets of 70% by 24/25 and work towards zero waste by 2050.

The overarching aim is to reduce the total volume of residual waste collected by encouraging people to recycle more of their waste. Ultimately this will allow us to work towards a Circular Economy, reduce carbon footprint and become more resource efficient.

This is so important to us and so important to you and our future generations, so we would really appreciate it if you could time to offer us your views on these proposals – as we can only meet these targets if we work together.

It is clear we cannot make the required step changes alone and a collective effort from residents, the workforce and the wider community will be essential to reduce consumption and improve resource management in Caerphilly. As a public body we will ensure we work with our communities to protect the long-term impact of our decisions in line with the Well-Being and Future Generations Act (2015) and the Environment Act (2021).



Please take some time to have your say on the proposals detailed over the following pages. The 12-week consultation will run from 5th February 2024 until 29th April 2024.

Once complete, please return the survey to any of the main council offices or your nearest library or leisure centre. If you prefer, you can also return it by post to: **Consultation and Public Engagement Officer, Service Improvement and Partnerships, Caerphilly County Borough Council, Penallta House, Tredomen Park, Ystrad Mynach, Hengoed CF82 7PG.**

Please return the survey on the following pages by Monday 29th April 2024.

Alternatively, you can have a say by completing the survey online:

Simply open the camera on your phone, hover over the QR code and you will be directed to the survey.



The survey can also be found at: <https://conversation.caerphilly.gov.uk/draft-waste-strategy-consultation>

Privacy notice: You have a number of rights in relation to the information we hold about you, including the right of access to your information and the right of complaint if you are unhappy with the way your information is processed. For further information on how we process the information and your rights please follow this link:

www.caerphilly.gov.uk/CaerphillyDocs/FOI/PrivacyNotices/Privacy-Notice-Consultations-Surveys.aspx

Resident Survey - Have your say:

Draft Waste and Recycling Strategy 2023-28

To meet Welsh Government statutory recycling targets of 70% by 24/25 and work towards zero waste by 2050, the council is proposing to focus on several key areas:

Do you agree or disagree that these are the areas that the council should focus on?	Agree	Disagree	Don't know
Reduce the overall amount of waste that needs to be disposed of (waste arising).	<input type="checkbox"/>	<input type="checkbox"/>	<input type="checkbox"/>
Increase opportunities for repair and reuse.	<input type="checkbox"/>	<input type="checkbox"/>	<input type="checkbox"/>
Increase the proportion and quality of material that is recycled.	<input type="checkbox"/>	<input type="checkbox"/>	<input type="checkbox"/>
Optimise contribution to and use of renewable energy.	<input type="checkbox"/>	<input type="checkbox"/>	<input type="checkbox"/>
Help our residents to manage materials more sustainably.	<input type="checkbox"/>	<input type="checkbox"/>	<input type="checkbox"/>

If you disagree with any of these focus areas, please tell us why:

Are there any other areas that the council should focus on to help achieve the goal of 'overall zero waste' by 2050?

To help achieve these goals, the council is proposing a number of actions/changes to the way we deliver waste and recycling services. We would like to know your views on each of these proposals.

Kerbside Dry Recycling Collection

The current co-mingled system for collection of dry recycling is **not compliant with the Welsh Government Blueprint**. We need to improve the quality of material that is recycled and reduce contamination. After looking at what has worked in other areas, we need to introduce a system of recycling waste collection.

Do you currently recycle brown bin/recycling box/recycling bag materials on a weekly basis at the kerbside?

Yes

No

If you answered No, please tell us why:

Proposal: To introduce separated dry waste recycling. The proposal is to introduce the use of weighted hessian sacks and boxes for separation of recycling. It would see requirements to separate cardboard, glass and mixed containers such as cans and plastic into three separate receptacles for collection.

Do you agree or disagree that this proposal will help us achieve our statutory recycling targets?

Agree

Disagree

Don't know

Please tell us why you say this:

Do you feel that this proposal will have a positive, negative, or neutral impact on your household?

- Positive
 Negative
 Neutral

Please tell us why you chose this option:

If a negative impact on you and your household, please tell us how we could help to reduce the impact e.g. alternative receptacles (at a cost to the individual household):

Kerbside Organic Recycling

We have been encouraging residents to recycle food waste and making sure that residents understand how and why we need to do this. The Mash for Cash campaign will remain in place (this is funded by the private sector and not the council) as an incentive to take part in food waste recycling. This is making a difference, but many residents are still placing food waste in their general waste bins. In a previous survey, many residents told us that they would be more likely to recycle food waste if provided with caddy liners. The council has introduced, for a trial period of 1 year, to provide free caddy liners to all residents across the borough.

Do you currently recycle food waste on a weekly basis at the kerbside?

- Yes
 No

If you answered No, please tell us why:

Garden waste collection

In a recent survey, residents suggested that garden waste could be collected less frequently. They also suggested that seasonal garden waste collection would be more appropriate as very few make use of this service during the winter months. Before we consider this proposal further, we would like to hear your views on how this change would affect you.

Proposal: To reduce the frequency of garden waste collection from weekly to fortnightly and only collect from March - end of October.

Do you currently make use of the weekly green/garden waste collection service?

- Yes
 No

If you answered No, please tell us why:

Do you agree or disagree that the fortnightly and seasonal collection proposal for garden waste collections will help us achieve our statutory recycling targets?

Fortnightly garden waste collections (currently weekly): Agree Disagree Don't know

Seasonal garden waste collections – March-end of October: Agree Disagree Don't know

Please tell us why you say this for both proposals:

Do you feel that these proposals will have a positive, negative, or neutral impact on your household?

- Positive
 Negative
 Neutral

Please tell us why you chose this option:

If a negative impact on you and your household, please tell us how we could help to reduce the impact:

Kerbside Residuals (General Waste)

Proposal: To reduce the frequency of refuse (residual waste) bin collections. Studies carried out confirm that approximately 50% of the contents our refuse (residual waste) bins can be recycled. With the ambitious targets the council must achieve, this is unsustainable. To encourage residents to further increase participation in food waste recycling and recycling, (brown recycling bin/box/bag materials) the council have to propose changing the frequency of refuse (residual waste) collections, from fortnightly as they currently are. Other Councils across Wales have already done this and this change brings increased recycling performance. **Simply put, fortnightly refuse collections cannot remain as they are. By staying the same, the Council cannot reach its targets.**

Please tell us your preferred option for changes to frequency of the refuse (residual waste) collection:

- 3 weekly collection.** We have calculated that if done correctly, this change could result in just over 4% improvement in our recycling rates). This however may still not be enough to meet our targets moving forward, and would mean that we would have to reconsider options for refuse collection frequency again (potentially to four weekly) in the short to medium term (within two years).
- 4 weekly collection.** If done correctly, this could result in just over 6.7% improvement in our recycling rates.

Do you agree or disagree that a reduction in frequency of refuse (residual waste) will help us achieve our statutory recycling targets?

- Agree**
- Disagree**
- Don't know**

Please tell us why you say this:

Do you feel that the proposed change to frequency of refuse (residual waste) collections will have a positive, negative, or neutral impact on your household?

- Positive**
- Negative**
- Neutral**

Please tell us why you chose this option:

If a negative impact on you and your household, please tell us how we could help to reduce the impact: Please note that additional food waste caddies are available free of charge to provide additional bin capacity. Additional refuse and recycling bin capacity would only be issued following an individual assessment.

Proposal: Expand Absorbent Hygiene Product (AHP) Collection. We recognise that there are certain groups who require additional/special assistance to deal with the type and amount of waste generated such as nappies and incontinence products. As the refuse (residual waste) collection service frequency reduces, it is proposed that the council would further expand its **weekly** collection service for Absorbent Hygiene Products (AHP), allowing for this specialist waste to be recycled. This would remain a request-based service and residents who need this service will be provided with bags which we will collect separately.

Do you agree or disagree that the expansion of the AHP collection service will help us achieve our statutory recycling targets?

- Agree**
- Disagree**
- Don't know**

Please tell us why you say this:

Do you feel that the expansion of the Absorbent Hygiene Products (AHP) collection service will have a positive, negative, or neutral impact on your household?

- Positive**
- Negative**
- Neutral**

Please tell us why you chose this option:

If a negative impact on you and your household, please tell us how we could help to reduce the impact:

Review of Household Recycling Centres (HRCs)

The council currently operates six HRC sites. Across the sites, HRCs are open 363 days of the year, from 1 April to 30 September – 9am to 5.30pm, Monday to Sunday and between 1 October to 31 March - 9am to 4.30pm, Monday to Sunday. Each site is closed 1 or 2 days per week. The range of what can be recycled is different across the sites. We have already started to make changes to the HRCs to improve the service at these sites through appointing more staff to work at the sites and will be introducing a pre-sorting of waste before visiting the sites. This will help us ensure that more waste is recycled and less waste goes to landfill.

Have you used a Household Waste Recycling Centre in the last 12 months? Yes No

If yes, how many times have you used a site in the last 12 months?

Less than 6 times 6-10 times More than 10 times

Which site do you use most often?

Aberbargoed - Bowen Industrial Estate Crosskeys - Full Moon Llanbradach - Trehir
 Penallta Industrial Estate Pontllanfraith - Penmaen Rhymney - Lawn Industrial Estate

Proposal: To review the current provision of HRC sites. The proposal would see an overall reduction to the number of sites. This would allow for increased opening hours at remaining sites.

Do you agree or disagree that this proposal will help us achieve our statutory recycling targets?

Agree
 Disagree
 Don't know

Please tell us why you say this:

Do you feel that this proposal will have a positive, negative, or neutral impact on your household?

Positive
 Negative
 Neutral

Please tell us why you chose this option:

If you feel that this proposal will have a negative impact on you and your household, please tell us how we could help to reduce the impact:

About You: To help us ensure that the waste services we provide meet the needs of all residents, if you feel that any of these proposals will affect you differently as an individual because of any of the following (age, disability, ethnic origin, gender, gender reassignment, marital status, religious belief or non-belief, use of Welsh language, BSL or other languages, nationality or responsibility for any dependents or because you or a member of your household are or have been a member of the armed forces) please give details below:

I am completing this survey ...

- As a resident of the County Borough
 As an elected member
 CCBC staff
 Other (please write in) _____

Type of property:

- Detached
 Semi-detached
 Terraced
 Flat

My postcode is:

Age:

- I have a disability, long term illness, health issue or disability that limits my daily activities.
 I am pregnant / have a young child in nappies.